



Shelter Bay Office Hours: Monday—Friday, 8 a.m.—5 p.m. • Closed Friday, June 19

PROCLAMATION

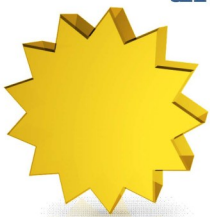
declaring

June 06, 2026

as

VOLUNTEER APPRECIATION DAY

In deep appreciation for the dedicated service that all of the Shelter Bay volunteers provide to the Community.



Mante Hicks
Board President

Wendy Poulton
Board Secretary

Here's What's Inside

Manager's Message	2
President's Message	3
Dock Notes	3
Shelter Bay Happenings	5
Calendar	11

Martha's Beach Hours

(Note change of seasonal hours.)

April 1 - September 30

The beach gate hours are 7 a.m. - 10 p.m.

Community Town Hall

The Community Town Hall will be held

Sunday, June 21, at 7 p.m.

At the Shelter Bay Clubhouse.

Send questions to board@shelterbay.net

Garden Club News

The month of May was a combination of garden-loving rain and sun, depending on the day. The club members took advantage of those sunny days and got more maintenance and new plantings done, contributing nearly 45 volunteer hours. As you garden, remember our wandering deer love garden vegetation, and the deer increased in number this year, as evidenced in the photo.

Thanks to:

Berit, Diane, Linda, Janel, Barb, and David for weeding the picket fence areas along the far end of the marina.

Berit, Linda, and Diane for weeding along our garden shed, and trimming and planting the fun blue pots in the front of the clubhouse.

Diane, Berit, Linda, Kati, Janel, and Kim for shopping for supplies, and planting the dock hanging baskets and blue pool pots. It was so nice to have the changeout of floral color around for the opening day of boating!

Linda (with maintenance team assist) for finishing the last garden bed around our BBQ area, dumping 23 buckets of rock to create a decorative dry creek bed!

A very special thank you this month goes out to Linda, who is resigning as our Garden Club Chair, after serving in that position for 3 years. The improvements and maintenance to Shelter Bay's garden areas during her tenure have been amazing, and we appreciate the creativity and leadership she has given.

Katie Lucas, Shelter Bay Garden Club



Greetings from your Interim Manager



Hello Shelter Bay Community. As we transition from spring to summer, we are finding our community in transition also. We accepted the resignation of Bill Palmer, and for the immediate future, I will be the Interim Manager, along with my role as Executive Secretary to the Board. This is my second time filling this position and I look forward to working with everyone.

I have been in Shelter Bay for five years and I am pleased to say that we are really starting to see the payoff from our increased Capital Projects (thank you, Lawson Earl, Project Manager) for everything from the beautiful new pool to numerous facility refreshes. I think we can all agree that these are noticeable and necessary improvements.

This will be the first full summer since completion of the pool renovations. With the pool opening comes the reminder that you will need to have purchased your new rec bands, signed pool waiver forms, and had your key fob set up for using the pool. Rec Bands are good from May 1 to April 30, so you will need a new one now. If you weren't aware, there is an ADA lift in the pool now if anyone needs it. We are still seeking summer pool attendants, so if you know anyone interested, please have them contact Kendra in the office at (360) 466-3805 Ext 1.

We have received the proper permits to complete the playground improvements outside the wetland buffer. We will provide more details on the timeline for that project as they become available.

We are also hiring a full-time maintenance person as one of our staff has moved away, and we are still looking to fill our normal part-time season maintenance position. Interested parties should submit a resume or application to the main office.

As I write this, I am sitting in the club house, which is jammed full of office staff and all the office furniture as we paint and recarpet the main office. It's been a couple of decades since much was done in there, and we hope you appreciate the refresh the next time you stop by.

Warm regards,

Ann Serwold, Interim Manager



Board of Directors Action Items

shelter bay community, inc.™

Regular Board Meeting—May 20, 2026

1. Ratified the Teller's Report and certified the results of the Annual Membership Meeting/Election held on May 16, 2026.
2. Authorized expanding the scope of work for the Clubhouse Office capital project to include painting and storage solutions for an additional \$20,000.
3. Authorized funding for Capital Project Shoreline Erosion & Mitigation to fund Lally Consulting's Tasks 3 & 4 in the amount of \$74,580 as presented.
4. Authorized funds request for \$22,908 to purchase a new John Deere hybrid-electric Greens Mower with FY27 Capital Funds for Vehicles and Heavy Equipment and allowing the order to be placed prior to end of FY to be paid in FY27.
5. Adopted Resolution 26-12 revising Rules & Regs Part I, General, Section XV Fee Schedule to increase the Fee for Late Payments from \$25 to \$75 effective July 1, 2026, and updating the fee for membership lists to include "additional copies" as the first one is free.
6. Approved Social & Rec Committee request to sponsor Slow Flow Yoga one hour a week at a time and location as approved by the office.
7. Approved updated Community Manager Position Description.
8. Approved updated Project Manager Position Description.
9. Declared June 6, 2026, as Shelter Bay Committee Volunteer Appreciation Day and to hold the Volunteer Appreciation Brunch.
10. Accepted the resignation of Community Manager, Bill Palmer, effective immediately.
11. Appointed Ann Serwold as Interim Manager until such time as a new Community Manager is hired, and approved compensation.
12. Approved changing the Project Manager position compensation to change from hourly to salary effective July 1, 2026.

shelter bay company™

Company Board Meeting

May 20, 2026

No meeting held.

Board President's Message



First thing this month, the Board would like to thank Bill Palmer, who resigned last month, for his time as Community Manager and all he accomplished. Our Executive Secretary, Ann Serwold, will serve as Interim Manager as we go through the process of the Executive Search.

Next, we would like to thank outgoing Director Rod Proctor, for his many years of service. Rod's seat was filled by Tom Urlich via community elections in May. Tom will begin his term on July 1, 2026.

Now I would like to focus on the Golf Course. There have been complaints about the lack of maintenance of the course over the past couple of years and last year we included capital funds to do improvements. The maintenance department has been working diligently on the course in the last several weeks. The greens have been plugged, sanded, thatched, and seeded, along with new tee mats and general clean up. The greens have been slow to respond. Staff reached out to local golf course maintenance professionals for advice on best practices. It was confirmed we are on the right track, and need to be patient as we watch the grass grow. The Community is also in the process of purchasing a new mower for the greens, as our old one has been in and out of service so frequently it impacted our ability to maintain the greens properly.

There have also been concerns about the grass browning in late summer due to dry weather. The course has no sprinklers in the rough, only on the greens and fairways. This helps us monitor our water conservation. In order to maintain these improvements, please remember to avoid the greens unless you are golfing (putting) or playing Disc Golf, and abide by the Community Rules which do not allow pets to run off leash on the course.

Monte Hicks, President, Shelter Bay Board of Directors

Dock Notes

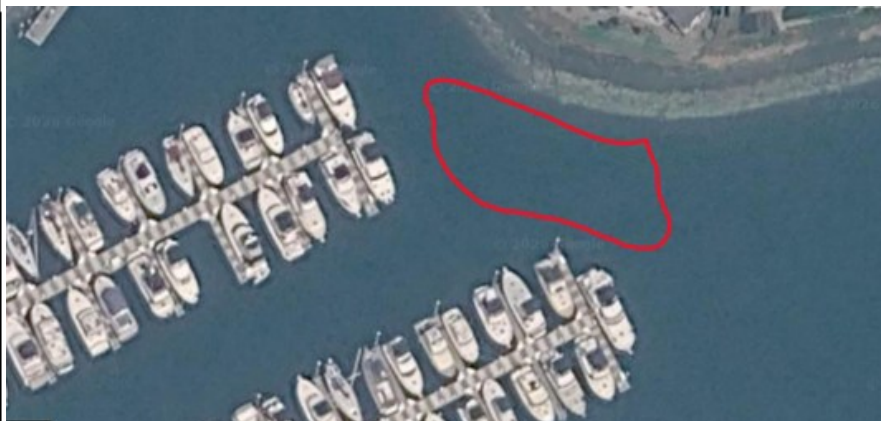


Summer is here! With that comes increased activity at the marina. We are thrilled to welcome everyone back for another incredible season on the water.

New Marina Rates go into effect July 1st, 2026.

Registration Reminder: June is the month to renew vessel registrations. Please update your registration and insurance information with the office. We will be checking for updated registrations in July. If you are away and unable to physically update your vessel sticker, you can message a picture of it to the harbormaster at (360) 333-2952. Failure to update your registration in a timely manner will result in a fine.

Slip Length:	Non-residents	Residents
Less than 32'	\$10.71	\$9.27
32' to less than 38'	\$11.25	\$9.73
38' to less than 44'	\$11.85	\$10.25
44' to less than 50'	\$12.40	\$10.73
50' to less than 55'	\$12.88	\$11.15
55' to less than 60'	\$13.79	\$11.92
60' and more	\$14.68	\$12.71
End Tie Docks	\$14.68	\$12.71
Overwide Slips		
40' to less than 44'	\$17.78	\$15.39
50' to less than 55'	\$19.29	\$16.69
55' to less than 60'	\$22.05	\$19.08



Reminder of Navigational Hazard in Shelter Bay: There is a high spot located past the end of the fairway between A Dock on the left and B Dock. Use caution when leaving your slip or on your way to the pump-out station.

On a zero tide, most of the harbor has 8.5-9.0 feet of water. On a zero tide, the encircled area has approximately 6 feet of water. On a -4.0 tide it would only have 2 feet of water! Please keep this in mind and always check your tide app or book before heading out.

See you in the marina! Your Harbor Team, Derek, Steve, and Kendra.

Harbor Shed hours: Mon-Fri, 9 a.m. to 5 p.m. **Harbormaster:** (360) 333-2952

May 16, 2026 Annual Membership Meeting Election Results

Emergency Closure Explanation



Voter Turnout Results: 32%		Director's Ballot		
Quorum Present (20% of Members Eligible to Vote):	Yes		Votes	Results
Total Possible Member Votes in the Community:	870	Tom Ulrich	245	Elected
Members Eligible to Vote:	848	Rick Parnell	243	Elected
Total Members Voting Electronically	247	Lois Watson	239	Elected
Total Members Voting by Mail	14	Glen Beam	1	
Total Members Voting In-Person	9	Tim Good	1	
Total Number of Members Voting:	270	Julie Peddy	1	Currently Seated
		Richard Hasslinger	1	
		Jan Paul	1	
		Jack Galbraith	1	Currently Seated
		Sherry Thostenson	1	

Shelter Bay would like to thank Fire District #13 for their timely response to the house fire on May 13.

No one was injured. Residents received an "Emergency Closure Announcement" providing notification of a section of residential road closure, which included the front gate. This newsletter edition has included a full-page insert for locating our Shelter Bay emergency exits, which are opened at such times, as well as when the Swinomish cemetery is hosting a service.

If you did not receive the May 13 Emergency Closure Announcement, check in with the office to be sure they have your preferred method of communication on file.

Ballot Issues	Yes	No	Results
#1 - Approve the Annual Meeting Minutes of May 17, 2025	258	12	Approved
#2 - Ratify FY 2026 - 2027 Operating and Capital Projects Budget	228	42	Ratified

Outdoor Burning: What's Allowed (and What Isn't)

Following up on a previous month's spring cleanup reminder, here's a quick refresher from the Shelter Bay Covenants and Rules & Regulations: **Outdoor burning of any kind is prohibited**, with limited exceptions. Residents may use **propane or charcoal appliances on their lot for recreational purposes**—such as barbecues, patio heaters, and fire pits—if **the fires are supervised and controlled**.

Wood or charcoal fires are allowed **only** in **community-approved** fire rings and grills, and only when no burn ban is in effect. Please remember that the **Swinomish Indian Tribal Community (SITC)** may issue burn bans for all tribal lands, which includes Shelter Bay, e.g., the burn ban currently posted at Martha's Beach.

In day-to-day terms, supervised wood or charcoal fires are permitted in the community fireplaces or grills at Rainbow Park, and at the barbecue pavilion near the pool—unless a current burn ban prohibits their use. Use of charcoal briquettes and/or propane in barbecues is allowed during a burn ban.



Important: Shelter Bay Covenants **prohibit weed-burning equipment** (for example, torch-style weed burners).

Plain-language summary:

Within Shelter Bay: No open fires are allowed during burn bans. Use of charcoal briquettes and/or propane in barbecues is allowed during a burn ban.

At home: You may use a **propane, wood pellet, or charcoal** grill or fire pit, **only if it is attended** and when not restricted by a burn ban.

In common areas: Wood or charcoal fires are allowed **only** in the **approved community** fire rings and grills (e.g., at Rainbow Park and at the barbecue pavilion near the pool), and only when not restricted by a burn ban.

Not allowed at any time: Burn barrels or fire pits used to burn **wood, trash, or yard debris**.

Not allowed: Weed-burning equipment.

Mike Shannon, Board Member and Chair, Architectural Compliance Committee



Community Events in Shelter Bay

Men's Fireside Gathering - Thursday, June 4 at 4 p.m. BBQ Pavilion.

Women's Breakfast – All Shelter Bay women are invited to come enjoy the monthly breakfast on **Tuesday, June 9**. A dish to share is welcomed but not required. Social time begins at **8:45 a.m.** and the breakfast buffet opens at **9:15 a.m.** in the Clubhouse.

Happy Hippie BBQ - Sunday, June 14 at 5:30 - 7:30 p.m. BBQ Pavilion. Prizes for top three hippie outfits. Bring a side dish to share (hot dogs provided). BYOB.

Shelter Bay Annual Garage Sale - June 20 at 9 a.m. Maps will be available at the gate and at the Clubhouse.

Register online now <https://shelterbay.net/shelter-bay-community-garage-sale/>

Presidential Cookie Party celebrating our nation's 250th birthday - June 28 at 2 – 4 p.m. Clubhouse. Calling all dough-mestic gods and goddesses! We're baking "zillions of bite-size cookies" using the original recipes of our First Ladies. We have them all, beginning with Martha Washington. It's a big undertaking, and we need lots of help. If you are interested in baking, please contact Jane Edgley at 360-632-0350 or jdedgley@gmail.com to set a time to look over her book of recipes.

UPCOMING EVENTS

Men's Fireside Gathering - Thursday, July 2 at 4 p.m. BBQ Pavilion.

Women's Breakfast - Tuesday, July 14, doors open at 8:45 a.m. Clubhouse.

Shredding Day - Saturday, July 18

Bitters Class - Tuesday, July 21

Annual Pickleball Tournament - Saturday, July 25

July Community Picnic, Sunday, July 26

Music on the Green featuring Mojo Cannon - Saturday, August 15, 4 - 6 p.m. BBQ Pavilion.

Do you wait for the newsletter each month to receive your Shelter Bay updates? The website has up-to-date information, and event follow-ups.
<https://shelterbay.net>

Shelter Bay Clubs

All Shelter Bay residents, and their guests, are invited to join us at the **Coquille Park Building**.

Shelter Bay Book Club meets at 1 p.m., the first Monday of each month. Please contact Elaine Hicks at elainecpta@hotmail.com if you are interested in attending. All book selections are listed on Shelter Bay website: Resources > Clubs & Groups.

Shelter Bay Mahjong Club meets every **Thursday, 2 - 4 p.m.** Beginners are welcome. Instruction is provided.

Shelter Bay clubs are organized by and for Shelter Bay residents who share common interests. Want to explore all the clubs and groups to find one right for you? Visit the website at: <https://shelterbay.net/shelter-bay/shelter-bay-clubs/>



Shelter Bay Garage Sale Registration

SHELTER BAY COMMUNITY Garage Sale



SATURDAY, JUNE 20

Starts at 9 am

80+ homes participating! Maps available
at entrance gate

**SB Chorus Bake Sale, Coffee & Hot Dog
sale in the clubhouse**

1000 Shoshone Dr., La Conner WA

Made with PosterMyWall.com

Communiversality: World Expo



When: Tuesday, **June 16, 6:30 p.m.**

Where: Shelter Bay Community Clubhouse

Presentation: **The World as seen through Expo**

Most of us never visit 166 countries. But for 20 days in May 2025, the speaker did the next best thing – exploring every corner of the World Expo in Osaka, Japan, where nations, large and small,

each built a pavilion to share their culture with the world. This talk is a rich visual, and sometimes auditory, journey through the food, music, dance, clothing, art, and artifacts that make our world so endlessly diverse. You'll also pick up surprising facts about U.S. and Canadian culture, get a brief history of World Expos, and see how the whole experience compares to Epcot's World Showcase. Come curious. Leave inspired.

Instructor: Keith Stobie is a Shelter Bay resident and world traveler across 7 continents and many countries. With his wife, Lois, they have attended 6 Expos in detail. In addition to traveling, they enjoy ballroom dancing together.

Please register online at the community website at

<https://shelterbay.net/shelter-bay/shelter-bay-communiversality/>

The garage sale is on **Saturday, June 20**, beginning at **9 a.m.**

This year, we encourage you to complete your registration online. <https://shelterbay.net/2026-garage-sale-registration-form/> Registration Deadline is June 15.

As we did last year, we will create two lists – one by address and one by category – to help buyers and sellers connect. Maps and lists will be available at the office several days prior and handed out at the front gate on the 20th. Day of event, maps and lists will be available at the clubhouse during the Chorus Bake Sale.

Shelter Bay Garage Sale Participants: If you have unsold household items we would be happy to pick them up to resell at Vintage La Conner. While we can't take everything, we will be glad to collect the items we can sell! Please contact Kasey at 559.260.5318 or Megan at 360.708.8763

Your Shelter Bay Garage Sale Team.

Questions? Contact Katie at r3adventures@msn.com or Kasey at kjensen2532@gmail.com

Sponsored by the Shelter Bay Social & Recreation Committee

Shelter Bay

**Come taste some
of the FAVORITE
Presidential cookie
recipes dating
back to George
Washington.**

**Cast your vote for
the top three
cookies.**

**Sunday, June 28,
2-4pm @ the
clubhouse**

Sponsored by Soc & Rec

Area Happenings

La Conner Vendors Market, **Saturday, June 6 & June 13, 10 a.m. to 2 p.m.** at the La Conner Marina, 613 N 2nd St, parking at North Basin Overflow Parking Lot. Come for the vendors, stay for the activities, music, and fun! Enjoy handmade goods, local businesses, and a great seasonal atmosphere. <https://members.lovelaconner.com/events/details/la-conner-vendor-market-11630>

La Conner Pride Events. Lots of events to check out this Pride Month, including a drag show, cruise, and family picnic. People of all genders and orientations are encouraged to come have a great time. Sponsored by La Conner Thrives Association. <https://www.laconnerthrives.org/event-list>

35th Anacortes Waterfront Festival, **Saturday, June 6, 10 a.m. to 6 p.m.** and **Sunday, June 7, 10 a.m. to 5 p.m.** at the Cap Sante Marina. The free, family-friendly event offers fun activities for all ages. There is an array of commercial and arts vendors, food trucks, and live music performances. <https://business.anacortes.org/events/details/2026-anacortes-waterfront-festival-23469>

Art Under the Stars La Conner, **Saturday, June 13, 4 - 8 p.m.** Second Saturday's gallery walk. Explore La Conner's thriving creative community. <https://lovelaconner.com/arts-under-the-stars-la-conner-second-saturdays-gallery-nights/>

Skagit Valley Renaissance Festival, **Saturday - Sunday, June 13 - 14.** Faire du Well - Welcome to the Shakespearean/Renaissance Festival at the Skagit County Fairgrounds, Mount Vernon. A vibrant tapestry woven from the threads of many Renaissances from many lands. <https://www.washakespeare.org/faire-du-well-june-13142026>

Skagit Symphony's Art in the Garden Bash & Garden Tour, **Sunday, June 28, 11 a.m. to 4 p.m.** This year's event is focused on the beauty of Bow-Edison. Relish the sights and sounds at the pastoral landscapes of the four historic properties featured this season. <https://www.skagitsymphony.com/garden-bash-2026>

Gentle Reminder



Planning to host your group event at the BBQ area by the clubhouse or Rainbow Park? Just as with indoor amenities such as the clubhouse and the Coquille Park building, picnic areas need to be reserved through the office. Summer is a busy time for family and group use, especially for the BBQ pavilion. Please avoid a use-conflict by securing your reservation. The Facility Reservation calendar can be viewed on the Shelter Bay website drop down menu under Resources -> Calendar: <https://shelterbay.net/shelter-bay/social-recreation-event-calendar/>

You can find the PDF reservation form for BBQ Pavilion and Rainbow Park picnic area here:

https://shelterbay.net/wp-content/uploads/2024/02/Picnic-Shelter-Area-Reservation-Request_SRC_2023.pdf

Call the office at 360-466-3805, to reserve the BBQ/picnic areas.

Did You Know? - Understanding Shelter Bay's Covenants Closing Architectural Certificates of Compliance

Have you performed work on your lot that was included in a request for a Certificate of Compliance (CoC)? Is the work completed, but there's not been a final inspection requested or performed?

The Shelter Bay Covenants provide for architectural control of permanent buildings, structures, and fences to be administered by the Architectural Compliance Committee (ACC). Structures include sheds and hardscapes, such as retaining walls, driveways, walkways, and patios. Exterior modifications such as decks, painting, and roofing require a CoC. The Covenants require that approved work be completed within one year from commencement of the project. The ACC provides control for this process using CoCs. These certificates are permanent documents filed in the Lot's files to maintain a record of all new and modified residential construction in Shelter Bay.

CoCs, in all cases, require final inspection and approval by the ACC or the Architectural Compliance Officer (ACO) before they can be closed and become a part of the Lot's file. Our new ACO has been actively reviewing and cleaning up open certificates that have never been subject to final inspections. There is a large backlog of these open certificates, making it difficult to determine the status of the covered work.

Your help is needed. If you believe you have an open certificate, please reach out to the ACO. You may contact the ACO, Mark Sniffen, via email (preferred) at msniffen@shelterbay.net, or by phone at 564-225-2970 Ext 5 (office), or 360-391-0252 (cell). Mark can help you either with the final inspection, if the work is completed, or by cancelling the certificate if the work has not been done.

Mike Shannon, Board Member and Chair, Architectural Compliance Committee

Local Services

Advertising in *Shelter Bay News* does not imply an endorsement by Shelter Bay Community, Inc. or the Board of Directors. Go to shelterbay.net for advertisement information, going to Governance/Committees/Communications Committee.



LATHAM MARINE
Yacht Systems Repairs
Specializing in Marine Refrigeration,
Heating and Air Conditioning
Servicing the Puget Sound Area
La Conner, WA

MICHAEL LATHAM
304-646-7107
MPLATHAM@YAHOO.COM

Cruisair[®]
by Dometic GROUP
frigoboat[®]
MARINE REFRIGERATION

Sarah Stensrud Massage
MA 61655485
www.sarahstensrudmassage.com
Please Call/Text (707)489-9206

ABSOLUTE
WINDOW CLEANING

"CLEAN AND HAPPY"
(360) 202-8387
WWW.AWCLEANANDHAPPY.COM

TEAM
KELLI LANG
RE/MAX GATEWAY



EVERYTHING WE TOUCH
TURNS TO *Sold!*

#1 team in WA state #10 team in the US #23 team worldwide

team@kellilang.com | KelliLangRealEstate.com

NEED YOUR GUTTERS CLEANED?

Alex Oczkewicz
La Conner, WA

- Gutter Cleaning
- Roof Cleaning
- Moss Treatment
- Gutter Repairs

360-420-5140
alex@suckitupgutter.com
LICENSED • BONDED • INSURED

GOODGUYS[™]
Roof & Gutter Cleaning
Home Maintenance

Call (360) 840-5508 for a free consultation.

Local Services

Advertising in *Shelter Bay News* does not imply an endorsement by Shelter Bay Community, Inc. or the Board of Directors. Go to shelterbay.net for advertisement information, going to Governance/Committees/Communications Committee.

LA CONNER CONDOS FOR SALE

Contemporary living in
the heart of La Conner

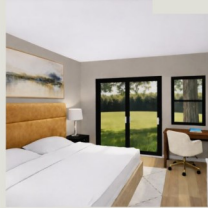
- Modern open-concept
- Stainless steel appliances
- Prime downtown location

STARTING AT \$509,999

Now available for pre-sale,
completing October



306 CENTRE ST



✉ livewideventures@gmail.com

☎ 360-708-5119

VINTAGE LaCONNER

NON-PROFIT THRIFT SHOP

OUR DOORS ARE (ALMOST) ALWAYS OPEN
And that's where you come in...
Corner of 3rd and Morris
Shop: Fri-Sat-Sun 11am-5pm
Donations Welcome: Mondays 1-6pm
Proceeds Benefit Our Community
New Arrivals Posted Thursdays on Facebook
Get a Thrill From a Thrift!



Shelter Bay Real Estate News

[HTTPS://www.shelterbaylaconner.com](https://www.shelterbaylaconner.com)

Tim Good (360) 708-3828

Mo Good (360) 441-9719

Local Services

Advertising in *Shelter Bay News* does not imply an endorsement by Shelter Bay Community, Inc. or the Board of Directors. Go to shelterbay.net for advertisement information, going to Governance/Committees/Communications Committee.



Fidalgo Electric
 Service Calls, Panel Upgrade,
 Remodels, Lighting,
 Backup Generator Systems
 Electric Vehicle Charging

Mark Moran
 Owner
 P.O. Box 711
 La Conner, WA 98257

360-202-4262
Fidalgoelectric@aol.com
www.Fidalgoelectric.com

Laura's Cleaning Service

(25 Years Professional Experience)

Residential, Commercial,
 Move-in, Move-out, and
 New Construction

425-760-6770

- *Free Estimates
- *Excellent References
- *Licensed and Insured



<h3>Raven's Cup Coffee & Art Gallery</h3>		<p>106 S. 1st Street, La Conner Open 7 am daily</p>	
<p>Beverages and pastries Visit us for a delicious coffee, tea, cocoa or pastry! Local favorites, such as Scone Lady scones, La Conner Tea, and Forte chocolates and cocoa! Try our Canadian latt-eh™!</p>	<p>Local art and cards Originals & reproductions for all budgets, by more than a dozen artists from Skagit & Island Counties, and more! Genuine hand-beaded Swinomish jewelry; greeting cards by local artists.</p>	<p>Gifts & souvenirs Carefully curated games, candles, jewelry and the biggest selection of coffee mugs in Skagit County. Unique La Conner and Skagit county souvenirs, only available here!</p>	<p>"Raven's Cup is La Conner's living room" – unsolicited Yelp review</p>


AHOY SERVICES




Pete Wedin
 Handyman

751 Maple Ave
 La Conner, WA 98257
360 395 1271
 Email:
pete@captpete.com


Specializing in interior carpentry-licensed bonded & Insured-AHOYSS*790QN



Wendy Poulton
 REALTOR®, MRP



✉ wendypoulton@windermere.com
 🌐 wendypoulton.com
 ☎ 360-840-3059



Thinking of selling your powerboat? La Conner Yacht Sales is busy with buyers and would like to talk with you about listing your vessel. Give us a call or stop by our office located in the La Conner Marina.

360.466.3300 Art & Marcie

Lots of Love
 For your pet while you are away.
 Jodie Baker
 310-993-1062
 Have peace of mind knowing your pet will be well cared for during your absence.

June

Sunday	Monday	Tuesday	Wednesday	Thursday	Friday	Saturday
	1 10 a.m. CERT Coquille Park 3 p.m. Safety Committee Meeting	2 9 a.m. Architectural Compliance Meeting 2 p.m. Rules Committee Meeting	3 3 p.m. Finance Committee	4 9 a.m. Facilities & Amenities Committee Meeting 4 p.m. SRC Men's Fireside Gathering	5	6 Shelter Bay Volunteer Appreciation Day
7	8	9 9 a.m. SRC SB Women's Breakfast 3 p.m. Harbor Committee Meeting	10 2 p.m. Social & Recreation Committee Meeting	11 1:30 p.m. Communications Committee Meeting	12	13
14 5:30 p.m. SRC Happy Hippy BBQ	15 4 p.m. Communiversity Committee Meeting	16 6:30 p.m. Communiversity—World Expo	17 4 p.m. Shelter Bay Board of Directors Meetings	18	19 Office Closed 	20 9 a.m. Community Garage Sale & Chorus Bake Sale
21 7 p.m. Town Hall	22	23	24	25	26	27
28 2 p.m. SRC Cookie Social	29	30				

Clubs, Groups (classes), and agendas are posted at the Website. Shelter Bay residents are encouraged to attend. Please visit the Calendar page at shelterbay.net for updates.



shelter bay community, inc.

1000 Shoshone Drive

La Conner, WA 98257

Pool Schedule

Daily 9 a.m. - 9 p.m.

Adult Swim hours: 9 - 11:30 a.m. and 8 - 9 p.m.

Open Swim hours: 11:30 a.m. - 8 p.m.

Pool Attendants' hours will be during Open Swim time. If there is no pool attendant present: members, guests and dependents are advised they are swimming at their own risk.

Recreation Bands

When purchasing your annual recreation band, you will be asked to sign the pool use waiver. Your resident key fob(s) to pool gate will then be activated.

Recreation bands, valid from May 1, 2026 through April 30, 2027, are available for purchase in the office and billed directly to the member's account.

Cost for the Resident Annual Band is \$10.00 per band. Guest Recreation Bands, valid for a designated 3-day time period, are \$5.00 each.

Recreation bands must be worn while using the golf course, tennis/pickleball/basketball courts, and the pool.

We request members notify Shelter Bay in writing if someone other than the member will be authorized to purchase rec bands. This will apply to member's children and to renters of Shelter Bay properties.

shelter bay community, inc.

Shelter Bay Interim Manager

Ann Serwold

Board of Directors

President - Monte Hicks

Vice President - Rick Parnell

Secretary - Wendy Poulton

Treasurer - Lois Watson

Secretary Pro Tem - Nancy Shimeall

Directors - Jack Galbraith, Julie Peddy,

Rod Proctor, and Mike Shannon

Executive Secretary - Ann Serwold

Committee Chairpersons:

Architectural Compliance: Mike Shannon

Rules: Susan Brown

Harbor: Phil Attneave

Communications: Jim Barrett

Green: Julie Peddy

Facilities: Jack Galbraith

Finance: Lois Watson, Treasurer

Safety: Brad Reading

Social & Recreation: Katie Reading

Committee Secretary: Renata McCauley

Shelter Bay Emergency Exits



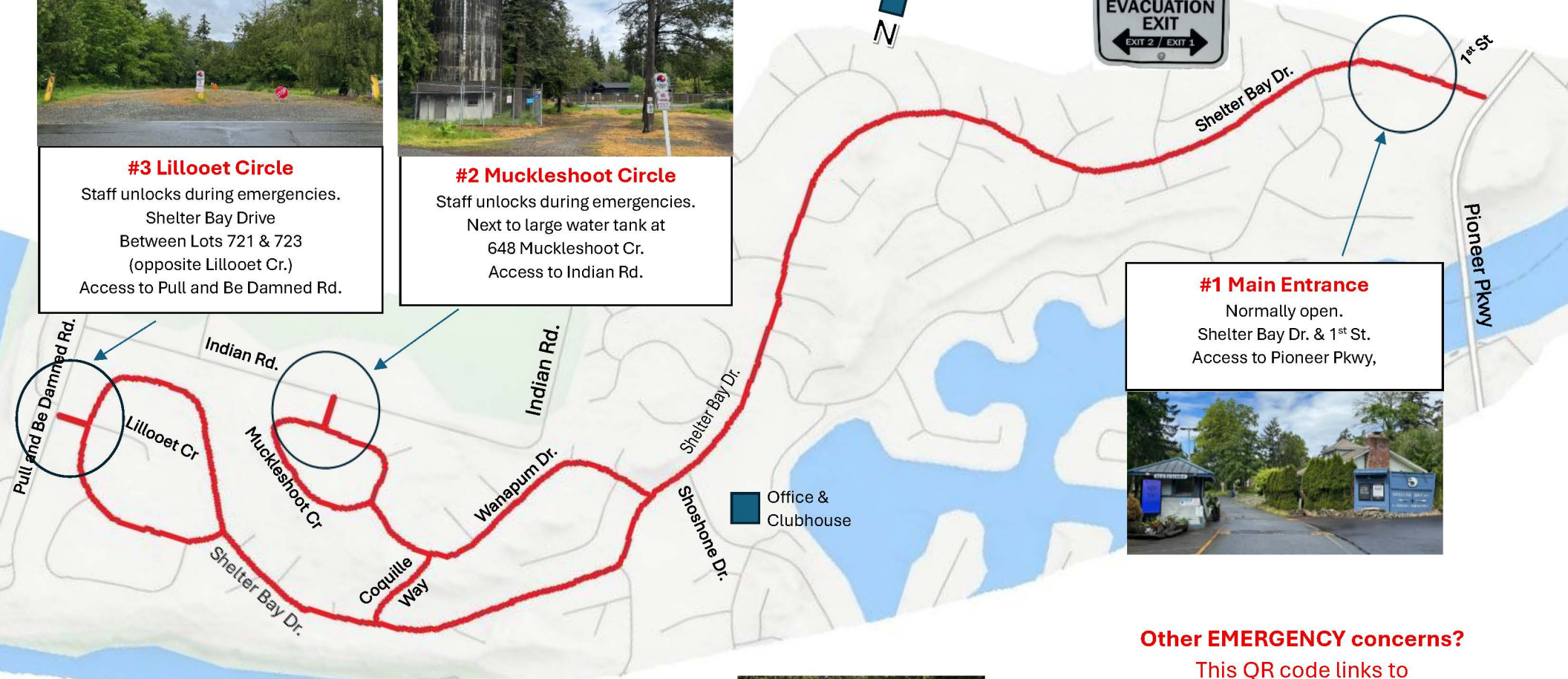
#3 Lillooet Circle
 Staff unlocks during emergencies.
 Shelter Bay Drive
 Between Lots 721 & 723
 (opposite Lillooet Cr.)
 Access to Pull and Be Damned Rd.



#2 Muckleshoot Circle
 Staff unlocks during emergencies.
 Next to large water tank at
 648 Muckleshoot Cr.
 Access to Indian Rd.



Look out
 for these
 signs



#1 Main Entrance
 Normally open.
 Shelter Bay Dr. & 1st St.
 Access to Pioneer Pkwy,



To return via Lillooet Circle

From the main gate, take 1st St. or Pioneer Pkwy. NORTH. Turn LEFT on Snee Oosh Rd., then LEFT on Pull and Be Damned Rd. Entrance will be on your left 500 feet past the intersection between Pull and Be Damned Rd. and Indian Rd.
 (Note: You will pass intersections with Indian Rd. on your left twice).



To return via Muckleshoot Circle

From the main gate, take either 1st St. or Pioneer Pkwy. NORTH. Turn LEFT on Snee Oosh Rd., then LEFT on Indian Rd. Entrance will be on your left 1,100 feet past the curve to the right in the road. (Address is: 18259 Indian Rd.)



Other EMERGENCY concerns?

This QR code links to sources for assistance



BE PREPARED! - KEEP COPIES OF THIS MAP AT HOME AND IN YOUR VEHICLES