



Shelter Bay Office Hours: Monday Friday, 8 a.m. 5 p.m. | Closed on January 1 and 19

Community Spotlight

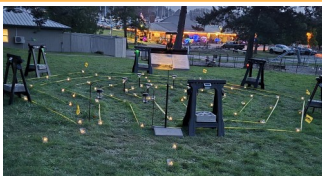


Entering Shelter Bay, most of us turn our gaze immediately to the bulletin board on the right-hand side for the Weekly Witticisms which tickle one's funny bone. Where do those eye-catching quips come from? Who decides what is worthy of posting? What magical spirits

are at work? You may have pondered on these questions, and so I asked. Two Shelter Bay residents switch off, to keep the content unpredictable: Aven Wright-McIntosh and Garry Cline. Garry's wife, Zayna, assists with letter placement on the message board after such crucial behind-the-scenes contributions as reviewing phrasing and punctuation, and helping condense messages to fit.

Friends send them amusing quips and some of the material comes from neighbors. Aven, an enthusiastic Soroptimist, initiated posting these thought-provoking, entertaining quips shortly after she moved to Shelter Bay, five years ago. Garry and Zayna, Kiwanians, joined the fun two years ago. To quote Aven, "We have a blast with our message nudges." Humorous or uplifting to the human spirit is the goal. One delightful "little" tradition that makes Shelter Bay an extra-special place to live. Thank you Aven, Garry, and Zayna.

Winter's Illuminescence



December nights were filled with lights across the brightness spectrum. Some residences had holiday decorations rivaling a competitive TV show, while others had the peaceful glow of the humble manger scene.

Nature woke us with some colorful sunrises. Evening skies, this time of year, are filled with a quadruplet of planets. And, as a first, a Winter Solstice pop-up labyrinth appeared on the greenway behind the maintenance building initiated by Kat Ulrich and designed by Dan Niven (both SBay residents).

Labyrinth designs consist of a single pathway leading to a central turn-around point. Those who took advantage of the weekend installation found the endpoint culminated in an expansive view of our marina sparkling with festive holiday bedecked boats. Some labyrinths offer a design element unique to their location. Shelter Bay's labyrinth featured tiny red and green lit lanterns—port and starboard guidance as walkers navigated to the center. We hope you were able to enjoy the labyrinth, marking the shortest day of the year.

Thank you to Kat and Dan for creating this magical experience and maintaining the soft glowing LED pathway bringing light to the depths of winter darkness.

Martha's Beach Hours

October 1—March 31
The beach gate hours are 8 a.m.—7 p.m.

Here's What's Inside

Manager's Message	2
President's Message	3
Dock Notes	4
Shelter Bay Happenings	5
Calendar	11

Community Town Hall

The Community Town Hall will be held **Sunday, January 25, at 7 p.m.** at the Shelter Bay Clubhouse.
Send questions to board@shelterbay.net

2026 SRC Polar Plunge

Commemorating changing of the seasons, a start to 2026, or simply opportunity to just take a polar plunge - a group of folks gathered on New Year's Day at Martha's Beach. This year, Social & Rec provided hot chocolate: 1 ½ gallons. Many watched from the comfort of a propane fire pit and enjoyed the company of their neighbors. Kat Ulrich guided a handful-plus of brave participants into the waters and extended an offering of gratitude and service to the earth and our community in this new year.



Photo credit to: Rafaela Morillas

Community Manager's Message



Greetings and Happy New Year from your Community Manager.

Last month my article focused on all the various things that Shelter Bay staff and volunteers accomplished in the 2025 calendar year, and it was an impressive list. It included the pool remodel, the renovation of the Coquille Park building, the addition of EV charging stations, the marina restroom roof, addition of Disc Golf, resurfacing of the tennis courts, and several paving projects throughout the community. We have also made good progress on the drive-by meter installations. Our compliance officer, who now oversees the tasks previously handled by the Green

Committee, has also been busy. She works closely with our tree-cutting vendor to ensure we address things as quickly as possible. I believe all this work has been helpful as we have these episodes of high winds.

While we did indeed accomplish many things, there are still projects that are yet to be completed. This would include improvements to the golf greens, and the long-awaited installation of the new playground equipment. We are diligently working on plans to get both projects underway as soon as we return to better weather in the spring.

I want to thank all the Shelter Bay committees for their diligent work on so many important items. One of the busier committees is the Architectural Compliance Committee (ACC). They meet twice a month for at least a couple of hours each time. These meetings consist of plan reviews for various projects submitted by community members, including new structures, fences, installation of HVAC, roof replacement, painting, etc. They also do many site visits. It is important to note that, before you start any sort of project on your house/lot, you should check with the office to see if, in fact, you need to obtain a Certificate of Compliance (CoC) from ACC. Given the high volume of projects and the desire to expedite matters for members, ACC recommended that the board approve funding for a new staff position to support this process. I am currently in the process of finalizing the hire of a new part-time staff member for the role of Architectural Compliance Officer. This new staff member will manage the daily processing of CoCs, including reviewing for completeness and following up if anything is missing. They will also ensure all requests adhere to SBC Rules and will conduct site visits as needed. We look forward to having this new staff member in place by mid-January.

The maintenance team, in addition to their daily water and sewer duties, continues to stay busy with a variety of things throughout the community. Recent weather and high winds dropped a lot of branches throughout the community and the team made several runs through the community picking up a full truckload. This will continue as needed. The team has ensured that all our plowing and sanding equipment is ready to go should we get snow. I am also asking them to continue to push forward on completing as many of the drive-by water meter tops as they can; however, this is weather-dependent. I will continue to assign additional projects as they are identified.

We look forward to another productive year in 2026!

Bill Palmer

Did You Know? Managing Storm Drainage



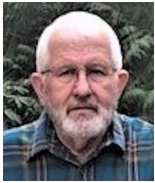
With the recent heavy rains, now's a good time to review Shelter Bay's requirements concerning drainage. From the Covenants, Article IV.12. Drainage: "No change in the natural drainage shall be made by any lot owner without prior approval from the committee responsible."

From the Shelter Bay Rules and Regulations, Part I – General, Article X.10.3: "The member is responsible for ensuring drainage from their property is in compliance with the Shelter Bay Stormwater Management Manual (SWMM) and properly ties into the community's drainage systems and does not adversely affect neighboring properties, community ditches, or roadways...no materials shall be added to a drainage ditch without prior written approval of the Architectural Compliance Committee."

Shelter Bay maintains drainage ditches along the roads, in common areas, and in greenbelts. While Shelter Bay is responsible for installation and maintenance of culverts carrying stormwater under the community's roads, property owners are responsible for installation and maintenance of culverts under their driveways or along the road right-of-way in front of their property. Homeowner changes to existing right of way drainage ditch must be approved by ACC. This includes: Addition or replacement of a culvert or other materials such as rock, stone or landscaping by a member and is subject to the requirements of the Shelter Bay Construction Guidelines. These guidelines require member submittal and approval of a Certificate of Compliance (CoC) by the Architectural Compliance Committee prior to the work being performed.

Management of stormwater runoff is a part of the normal review and approval process for new home construction but may easily be overlooked during minor projects such as landscaping or installation of new hardscapes (for example patios, walkways, retaining walls, or expanded parking areas). Most projects need both a Swinomish Planning Department permit and a Shelter Bay Certificate of Compliance. If you're not sure if a permit is required, please contact the Swinomish Planning Office by emailing permits@swinomish.nsn.us or calling (360) 588-3002.

Board President's Message



As we reflect on this year, I want to share my sincere gratitude for the dedication and leadership of the Board. This year was one that showed board engagement at every level defined by measurable progress on Capital Projects, in-depth financial review, updating the Statement of Strategic Intent, and making sure that the Shelter Bay Community is committed to that Statement.

Throughout the year, the board remained deeply committed to the lease negotiations and ensuring that capital projects were completed for community safety and enjoyment, from paving and painting of roads to finishing the pool. We also want to thank Community Manager Bill Palmer and his team for everything they do every day with the organization's best interests at heart.

We worked together to ensure accountability and purposeful governance as we reviewed changes to our organizational documents. We held monthly town halls to maintain open communications with residents, and we continue to foster relationships with our neighboring communities of the Swinomish Tribe and the Town of La Conner.

I also want to recognize the dedication of Shelter Bay staff and offer special appreciation for our many volunteers whose service throughout the year is immeasurable. Without the dedication of our volunteer members taking on these roles there simply would be no way to accomplish what we do here every day. Their work, often behind the scenes and always unpaid, shows a level of dedication that is priceless.

As fiscal year 2026 ends June 30, and fiscal year 2027 begins, we will begin the budget process for FY27, we will seek board candidates for the FY27 positions, and we will remain committed to clear communication, purposeful governance, and working to position the organization for success now and well into the future.

Wishing you and your families a new year filled with health and happiness.

With gratitude,

Monte Hicks, President, Shelter Bay Board of Directors



Board of Directors Action Items

shelter bay community, inc.™

Regular Board Meeting—December 17, 2025

Meeting Canceled—No Business

shelter bay company™

Regular Board Meeting—December 17, 2025

Meeting Canceled—No Business

Filing for Board Member Candidacy May 16, 2026 – Annual Membership Meeting/Election

Board Member Candidacy Deadline:

Three (3) three-year positions on the Board of Directors will be elected at the Annual Membership Meeting/Election held on May 16, 2026. VP Rick Parnell, Treasurer Lois Watson, and Rod Proctor currently hold the expiring terms.

Members wishing to file should complete the Board Candidate Application Form which is available [here](#), on the website at www.shelterbay.net under Governance > Board of Directors, or by visiting the Office to request one. Anyone wishing to become a Board candidate must be a member in good standing in the Community.

Board candidate applications must be submitted to the Shelter Bay office no later than:

5:00 p.m. on Monday, March 23, 2026

All eligible members that are interested are encouraged to file. If you would like more details regarding a director position please email Board@shelterbay.net and someone will reach out.

Wendy Poulton, Board Secretary



Fire District 13

November 16 - December 15, 2025

Shelter Bay & Eagle's Nest Response Summary

Rescue & Emergency Medical Services	25
Hazardous Condition (no fire)	1
Service Calls	3
Good Intent Call	1
False Alarm & False Call	1
Total Responses	31

Fire District 13 News Update

Wednesday, January 14 at 6 p.m., Commissioners have planned a traditional "push-in" ceremony for the district's new water tender at the Swinomish FD 13 station, 17433 Snee Oosh Rd. This event was rescheduled from earlier this fall. The community is welcome to attend, but no refreshments are planned.

Dock Notes



Happy New Year from your Shelter Bay Marina team! As we turn the calendar to January 2026, the marina might be quiet, but our team is already gearing up for a spectacular year on the water. Whether you're planning your 2026 adventures or checking off your winter maintenance list, this month is all about laying the groundwork for your best boating season yet.

With winter weather on full display here in Shelter Bay, here are some tips when checking your boat.

- Make sure your canvas is fully snapped and secured (we've already had a few incidents of missing canvases).
- Take a moment to inspect your dock lines for any wear and tear that might compromise them, as well as making sure your boat is tied up correctly.
- Plugging in your electrical cord correctly by locking it into the receptacle will help prevent arcing at the pedestal. Stop by the Harbormaster's office to look at the burnt-out receptacles.
- With all the rain we have been getting, some boaters might need to bail out their dinghy if it is not covered properly. If your dinghy is covered, make sure it's secured and working as it should. Please follow guidelines when tying up your dinghy. Dinghies must be tied in front of your vessel within your slip and must not block emergency ladders.
- Ensure you have emergency contact cards visible and displayed correctly. Please double check those cards aren't covered when you place your window canvases.

Wishing you the best in the new year and safe adventures out afloat or ashore - Derek, Steve, and Kendra

Harbor Shed hours: Mon-Fri 9 a.m. to 5 p.m. **Harbormaster:** (360) 333-2952

Planning for Power Outages



Our five-hour power outage on Dec 17 was an irritating reminder that winter has us in its grip, with rain, wind, floods, landslides, power outages, and road closures. Most of us can manage a short outage: dress warmly, don't leave the refrigerator door open, and so on and on.

However, some Shelter Bay residents have medical challenges, like needing continuous supplemental oxygen or a warm house. If you're a caregiver, or have a neighbor in that situation, is there a plan for a protracted outage?

Puget Sound Energy has an Outage Information System, accessed by entering pse.com/en/outage, or calling 1-888-225-5773, which has been very good in the past at estimating when power will be restored. What are your options if PSE says the power will be out for 12 hours?

Shelter Bay is working on procedures for using the clubhouse as an emergency shelter. The plan is to have emergency power, warmth, and light refreshments available. That plan and procedures will be announced as soon as complete.

Many Shelter Bay households have auxiliary generators. Do any of your neighbors have generators?

If these resources are unavailable, then the next option would be to search online for Red Cross Shelters and plan on how you will get from your house to the shelter. That might be difficult. In winter, I never let the fuel in my car go below half a tank.

If your loved one needs medical help, call 911. However, fire districts may be experiencing high call volumes in these situations and other patients may be ahead of you, delaying transport.

Shelter Bay has a Disaster Assistance Center (DAC) which is based at a container in the Storage Lot. The DAC has emergency communications, tents, generators, and medical supplies. Our current challenge is that we're woefully short of personnel to open and operate the DAC. **If helping your neighbors is fulfilling for you, then go to the CERT page on the Shelter Bay website to discover how to help yourself and your neighbors.**

I wish we had a system that would always be available to help everyone when needed. Because we don't, I strongly suggest that you consider your situation and have your own emergency plan in place.

Ted Taylor, Safety Committee



Compliance Corner

Happy Holidays, Shelter Bay! December 16, Certerra, a leader in materials engineering and earth sciences, was onsite to conduct a community-wide geotest. There was an influx of questions from members in response to the email notification. For clarification, I will address them here.

A geotest is geotechnical testing that analyzes soil, rock, and other materials for stability, erosion, and potential risks. A geotest is almost always required when applying for a Shoreline & Sensitive Area (SSA) Permit through the Swinomish Tribe. Anything within 200 feet of the water, or any sloped region, is considered an SSA. As you can imagine, that covers quite a lot of the community. Because geotesting can be costly, it was determined that the most effective approach would be to do one for the entire community, rather than piecemeal.

Ultimately, the test results will provide valuable information for applying for SSA permits to address long-neglected greenbelts. The areas of focus for the geotest were the slope behind Muckleshoot Circle, Skagit Ridge, Shoshone Ridge, and the wooded greenbelt at the top of Shelter Bay Drive. Once we have the geotest results, I can apply for SSA permits for each of the regions listed above, and we will be able to clean up and Firewise these greenbelts in spring/summer 2026.

To be clear, there was no drilling or earth disruption for this testing. If you have any further questions, please feel free to reach out to me.

Riley Reynolds at reynolds@shelterbay.net 360-466-3805, Ext. 7

Communiversity: Important Issues in Men's Health

When: **Tuesday, January 13, 6:30 p.m.**

Where: Shelter Bay Community Clubhouse (In-person only)



Two physicians from Island Health, Dr. Paul Hammer and Dr. Brock Boehm, will discuss issues that men don't often talk about. The topics will concentrate on mental health and physical health, and questions are encouraged. You can register online at the community website under Resources/Communiversity, or at

<https://forms.gle/1fvJA6PJBREbLNWD9>

Communiversity: Being Happy and Growing Older



When: **Tuesday, January 27**

Where: Clubhouse (In-person only)

Instructor: Jim Barrett

Let's talk about finding happiness while celebrating the passage of time. We'll share what science and research say about happiness, look at some of the happiest places in the world and what

they do well, and talk about how our society supports an aging population. Most of all, we'll focus on down-to-earth ideas we can use to foster happiness in our own lives and what we can do together to keep Shelter Bay an even more positive and fulfilling community in which to live. You can register online at the community website under Resources/Communiversity or at <https://forms.gle/jaFYSvN9aMGkxRJ9>.

Shelter Bay Book Club

Meets at 1 p.m., the first Monday of each month. Book selections are listed on Shelter Bay website: Resources > Clubs & Groups. All Shelter Bay residents are invited to join us. Please contact Elaine Hicks at elainecpta@hotmail.com for more information.

Monday, January 5 at 1 p.m.

Book: *Lovely One: A Memoir* | By: Ketanji Brown Jackson
Coquille Park Building

Mahjong Weekly Group Begins

Playing mahjong is a popular intellectual and social leisure activity believed to be beneficial to cognitive and psychological functioning.

Whether you are a total beginner, or have the tile game down pat, we invite you to join us each **Thursday**, beginning **January 8, 2 - 4:30 p.m.**, in the **Coquille Park Building** (at intersection of Shelter Bay Drive & Coquille Way).

Mahjong is played by groups of four players seated around a table. Tiles, placed in the center of the table, are shuffled, dice are rolled, and the tile selection begins. In turn, tiles are drawn and discarded to build a complete hand. The first player to make a winning hand of 14 tiles calls "mahjong", ending the game. The tiles are then scored, and the round's winner is declared.

Questions? Contact Linda, at lindasovie23@gmail.com

Shelter Bay Chorus 2026

A new year is upon us. That means it is time for new hobbies we want to develop or old skills we want to perfect. I've got a beautiful note to suggest to you!

Come join the Shelter Bay Chorus as we begin rehearsing for our 2026 spring concert season.

Rehearsals start on **Thursday, January 22 at the Shelter Bay Clubhouse at 4:30 p.m.**

Come find your voice, meet new friends, and have the time of your life.

Our music is always fun and uplifting. We will sing a mix of familiar songs from the past and new songs that might just become your new favorites.

Rehearsals are held each Thursday from 4:30 - 6:30 p.m. Questions? Phone 425-260-1329

Joyce Nugent, Shelter Bay Chorus



Community Events in Shelter Bay

Sponsored by the Social and Recreation Committee

Thank you to everyone in our community who joined us for our fun holiday events! SRC truly enjoyed hosting you. Also, a **big thank you** from La Conner Sunrise Food Bank for all your generous donations.

Now... we're looking forward to many exciting events in **2026...** to continue building our community spirit.

BINGO Night - On **Saturday, January 10 at 6:30 p.m.** in the **Shelter Bay Clubhouse**. Bring all the family for a fun evening of BINGO, prizes, and ice cream.

WOMEN'S BREAKFAST - On **Tuesday, January 13** in the **Shelter Bay Clubhouse**. Coffee Hour begins at **8:45 a.m.** The breakfast buffet opens at **9:20 a.m.** We love welcoming first timers—make this month your first! You're welcome to bring a dish to share, but it is not required.

UPCOMING EVENTS

VALENTINE'S DAY CELEBRATION - On **Saturday, February 14 at 9 a.m.** in the **Shelter Bay Clubhouse**. We're having a very special **Galentine Women's Breakfast!** We're hoping that SB women who work during the week can join us.

EXCLUSIVE HAPPY HOUR for Shelter Bay residents featuring Shelter Bay artists in the clubhouse on **Sunday, March 8**.

Watch for more details for these events and for many more coming events.

LAST CALL : All Artists of Shelter Bay



Just a few more weeks to let us know if you want to participate in a visual art show featuring artists in Shelter Bay. This is an exclusive opportunity to display some of your art, and to meet and talk with fellow artists in our community.

The art show, entitled "Artists of Shelter Bay" will take place in the Shelter Bay Clubhouse Saturday, March 7 through Sunday, March 8, 2026.

Though there will be no "theme" for this art show, we are asking that the art be "family-friendly" and avoid politics. Art mediums can include painting, fiber arts, carving, glass, jewelry, and more. Artists can indicate prices for work and provide contact information to the community, but sales of artwork are not allowed in the venue.

Sign up by sending your contact information (Name, Lot number, Phone, Email) and your art medium to Lisa Bade at Lisabade42@gmail.com. There will also be a paper sign-up form in the Shelter Bay office. **The deadline for artists to sign up is Friday, January 16, 2026.** We're looking forward to hearing from you!

Disclaimer: Please be aware that Shelter Bay and Shelter Bay Inc. will not be held responsible for any broken or stolen artist's property.

Area Happenings

Art Under the Skies: La Conner Gallery Nights, Saturday, January 10, 4 p.m.

Writings on the Wall Open Mic, **Saturday, January 10, 1 p.m.**, MoNA La Conner. Local poets are invited to read their original poems in the galleries as a closing celebration for the end of the exhibition *Vitamin P: NW Recent Painting in the Pacific Northwest*. This event will be MC'ed by painter and poet Duane Kirby Jensen, the host of Everett Poetry Night. Poets are encouraged to explore the *Vitamin P: NW* exhibition as inspiration for their ekphrastic poetry and to sign up in advance to read up to five minutes of original writing.

<https://www.monamuseum.org/events/poetry-jan10>

Zentangle 101, Saturday, January 17, 10 a.m. to noon, La Conner Swinomish Library. Learn the basic concepts of Zentangle and create a beautiful piece of artwork with certified Zentangle teacher Sara Harlan. This free workshop includes all materials. Space is limited to 15 participants. Call the library to reserve your spot: 360-466-3352.

2nd Annual Chowder & Chili Cook Off, Saturday, January 24, 3 - 6 p.m., La Conner Elementary School. Fun for the whole family as you decide who has the best chowder & chili in La Conner. Fundraiser for La Conner Fire Department. \$20 at the door, kids under 6 are free!

<https://www.laconnerfirefightersassociation.org/event-calendar/event-one-khgtt>

6th Annual La Conner Birding Festival, weekend, January 24 - 25. This year's festival promises a captivating experience, featuring local artists, educational opportunities, interactive displays, and delightful children's activities.

<https://lovelaconner.com/la-conner-birding-festival/>

Illuminight Winter Walk, Friday, January 30, 5 - 7 p.m., Mount Vernon Riverwalk Plaza. Get ready for a magical evening.

<https://mountvernonwa.gov/calendar.aspx?EID=4927>

Winter Birding by the Sea with Skagit Audubon, Saturday, January 31, 10 a.m. to noon, Anacortes, Guemes Channel Trail. Calling all birders and birding curious! Enjoy a morning with Salish Sea Naturalists and Skagit Audubon volunteers exploring the shores of the Salish during the best birding season of the year. <https://www.thesalishseaschool.org/community-events>

Thank You!



As we pack up the holiday decorations that carried us from Thanksgiving through to New Year's Eve, Social & Recreation Committee (SRC) wants to say **Thank You!**

We appreciate all our residents who attended our SRC hosted functions. We love being your community Social & Recreation Committee. Most especially, we are grateful for the residents who contributed food, and Thanksgiving meal prep and craft-designed decorations. All of this makes our Shelter Bay gatherings outstandingly special.

Several residents went above and beyond in time and monetary donations. They know who they are, and theirs was intended as a gift of love to brighten the holiday season. A holiday elf deserving of a high octane mention is Julie Peddy. Julie puts community into all she does. Witness Julie's hand as chef extraordinaire at Shelter Bay's Thanksgiving community feast featuring 5 turkeys, 2 hams, gravy making and more. Then with hardly time to recover, Julie demonstrated (and shared recipe for) her family's Christmas cranberry jam. All the participants received their own jar filled with love to take home.

Newcomers to Shelter Bay residency, and deserving of a special welcome thanks, are Rod and his son, Cameron, for decorating and deftly towing Rod's 12' utility trailer on a chilly December evening for Christmas Caroling.

Eat, sing, and make merry has been SRC's intent through the fall and winter months. We have enjoyed meeting new residents as well as discovering new things about our long-time members. Please join us as we kick off 2026. We'll have a fun theme each month, Happy Hour Gatherings, planned just for you.

Shelter Bay Social & Recreation Committee



**Shelter Bay Harbormaster Derek, clearing the marina of large debris after the storms of early December.
Heavy rains brought exigency to this routine task.**

Photo credit to: Lawson Earl

Local Services

Advertising in *Shelter Bay News* does not imply an endorsement by Shelter Bay Community, Inc. or the Board of Directors.
Go to shelterbay.net for advertisement information, going to Governance/Committees/Communications Committee.



Shelter Bay Real Estate News

[HTTPS://www.shelterbaylaconner.com](https://www.shelterbaylaconner.com)

Tim Good (360) 708-3828

RSVP Real Estate
Mo Good (360) 441-9719

Taste of La Conner Pets



Free sample buffet for cats and dogs including fresh, freeze-dried and kibble in a variety of brands.

Mon-Fri
11am-6pm
Saturday
11am-4pm



try it before you buy it!

laconnerpets.com • 708 E Morris St. • 206-486-2240

Vessel Watch

Provided by



Larsen Marine

(360) 540-3536

Sarah Stensrud Massage

MA 61655485

www.sarahstensrudmassage.com

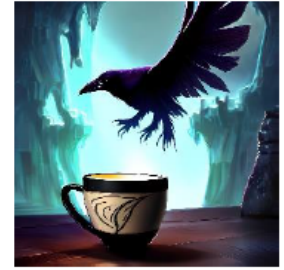
Please Call/Text (707)489-9206

Local Services

Advertising in *Shelter Bay News* does not imply an endorsement by Shelter Bay Community, Inc. or the Board of Directors. Go to shelterbay.net for advertisement information, going to Governance/Committees/Communications Committee.

Raven's Cup Coffee & Art Gallery

106 S. 1st Street, La Conner
Open 7 am daily



"Raven's Cup is La Conner's living room" – unsolicited Yelp review

Beverages and pastries

Visit us for a delicious **coffee**, tea, cocoa or pastry! Local favorites, such as **Scone Lady scones**, La Conner Tea, and **Forte chocolates** and cocoa! Try our Canadian latt-eh™!

Local art and cards

Originals & reproductions for all budgets, by more than a dozen artists from Skagit & Island Counties, and more! Genuine hand-beaded Swinomish jewelry; greeting cards by local artists.

Gifts & souvenirs

Carefully curated games, candles, jewelry and the biggest selection of coffee mugs in Skagit County. Unique La Conner and Skagit county souvenirs, only available here!

AHOY SERVICES



Specializing in interior carpentry-licensed bonded & Insured-AHOYSS*790QN

Pete Wedin Handyman

751 Maple Ave
La Conner, WA 98257

360 395 1271

Email:
pete@captpete.com



WENDY POULTON

BROKER | REALTOR®, MRP

WENDY.POULTON@THEAGENCYRE.COM
360.840.3059

370 NE CAMANO DR STE 6, CAMANO ISLAND, WA 98282 | THEAGENCYRE.COM
AN INDEPENDENTLY OWNED AND OPERATED FRANCHISEE



Thinking of selling your powerboat? La Conner Yacht Sales is busy with buyers and would like to talk with you about listing your vessel. Give us a call or stop by our office located in the La Conner Marina.

360.466.3300 Art & Marcie

CALL THE DE-CLUTTERING DIVAS

DANA (360) 220-1328

JILL (360) 305-2301

Downsizingmadeeasy@outlook.com

GOOD GUYS™

Roof & Gutter Cleaning
Home Maintenance



Call (360) 840-5508 for a free consultation.



**ABSOLUTE
WINDOW CLEANING**

"CLEAN AND HAPPY"

(360) 202-8387
WWW.AWCLEANANDHAPPY.COM

Local Services

Advertising in *Shelter Bay News* does not imply an endorsement by Shelter Bay Community, Inc. or the Board of Directors.
Go to shelterbay.net for advertisement information, going to Governance/Committees/Communications Committee.



Fidalgo Electric

Service Calls, Panel Upgrade,
Remodels, Lighting,
Backup Generator Systems
Electric Vehicle Charging

Mark Moran
Owner
P.O. Box 711
La Conner, WA 98257

360-202-4262

Fidalgoelectric@aol.com
www.Fidalgoelectric.com



Kristi Gabrielse

BROKER

(360)420-3119

kristig@windermere.com

Shelter Bay Specialist



"Where you live, is my business."

3018 Commercial Ave | Anacortes, WA 98221 | 360.293.8008 | kristig.withwre.com

TEAM
KELLI LANG
RE/MAX GATEWAY



EVERYTHING WE TOUCH
TURNS TO *Sold!*

#1 team in
WA state

#10 team in
the US

#23 team
worldwide

team@kellilang.com | KelliLangRealEstate.com



Guild
mortgage
OWN WHAT MATTERS

Andrya Corral

Branch Manager | NMLS #664737
Shelter Bay home loan specialist

O: 360.293.1006

M: 360.421.4982

E: acorral@guildmortgage.net

3014 Commercial Ave, Suite A
Anacortes, WA 98221



Company NMLS #3274 | Equal Housing Opportunity
www.nmlsconsumeraccess.org

Visit my website:
www.guildmortgage.com/andryacorral

Laura's Cleaning Service

(25 Years Professional Experience)

**Residential, Commercial,
Move-in, Move-out, and
New Construction**

425-760-6770

*Free Estimates
*Excellent References
*Licensed and Insured



VINTAGE LaCONNER

NON-PROFIT THRIFT SHOP

DOWNSIZING? Uplift our Community!
Donate your unwanted treasures and let us turn the proceeds
back into our community. Bring 'em by! Corner of 3rd & Morris

New (Longer!) Donation Hours: Mondays 1 - 6pm

Shopping: Fri-Sat-Sun 11am - 5pm

New Arrivals posted Thursdays on Facebook



January

Sunday	Monday	Tuesday	Wednesday	Thursday	Friday	Saturday
				1 Office Closed—New Year's Day	2	3
4	5 10 a.m. CERT—Coquille Bldg 3 p.m. Safety Committee Meeting	6 9 a.m. Architectural Compliance Meeting 2 p.m. Rules Committee Meeting	7 3 p.m. Finance Committee	8 9 a.m. Facilities Amenities Committee Meeting 1:30 p.m. Communications Committee Meeting	9	10 6:30 p.m. SRC Bingo
11	12	13 9 a.m. SRC SB Women's Breakfast 3 p.m. Harbor Committee Meeting 6:30 p.m. Communiversity—Men's Health	14 2 p.m. Social & Recreation Committee Meeting	15	16	17
18	19 Office Closed—Holiday 4 p.m. Communiversity Committee Meeting	20 9 a.m. Architectural Compliance Committee Meeting	21 4 p.m. Shelter Bay Board of Directors Meeting	22	23	24
25 7 p.m. Town Hall	26	27 6:30 p.m. Communiversity—Being Happy & Growing Old	28	29	30	31

Clubs, Groups (classes), and agendas are posted at the Website. Shelter Bay residents are encouraged to attend.
Please visit the Calendar page at shelterbay.net for updates.



shelter bay community, inc.

1000 Shoshone Drive

La Conner, WA 98257

shelter bay community, inc.

Shelter Bay Community Manager

Bill Palmer

Board of Directors

President - Monte Hicks

Vice President - Rick Parnell

Secretary - Wendy Poulton

Treasurer - Lois Watson

Secretary Pro Tem - Nancy Shimeall

Directors - Jack Galbraith, Julie Peddy,

Rod Proctor, and Mike Shannon

Executive Secretary - Ann Serwold

Committee Chairpersons:

Architectural Compliance: Mike Shannon

Rules: Don Moore

Harbor: Phil Attneave

Communications: Jim Barrett

Green: Julie Peddy

Facilities: Jack Galbraith

Finance: Lois Watson, Treasurer

Safety: Brad Reading

Social & Recreation: Katie Reading

Committee Secretary: Renata McCauley