



Shelter Bay Office Hours: Monday—Friday, 8am—5pm

Architectural Compliance Committee

Are you an architect, permit officer, builder, land surveyor, or civil engineer? Do you have an interest in reviewing plans and designs for new construction and renovations in Shelter Bay? If so, the Shelter Bay Architectural Compliance Committee is looking for you! We meet on the first and third Tuesdays of each month. We're looking for volunteers to review design submittals for home projects in Shelter Bay.

This work includes, but is not limited to, fencing, exterior lighting, new construction, painting, siding, decks, storm water management, and some landscaping.

What makes a successful committee member? Attention to detail, knowledge of common building practices, ability to read and interpret scale drawings and site plans, knowledge of Shelter Bay construction guidelines and covenants, ability to collaborate with a team, and an interest in community governance.

We currently have openings. If you're interested, please contact Renata McCauley, Committee Secretary, at rmccauley@shelterbay.net.

Coquille Park Survey

On October 20th Shelter Bay's residents were invited to participate in a survey to determine the best use of the area previously occupied by the upper pool.

A summary of the survey's results will be included in next month's newsletter, but full details can be seen now on Shelter Bay's website: [Click here](#).

(Note: If you are reading the printed version of this newsletter, please use the link on the electronic version of the newsletter at ShelterBay.net).

Newsletter Subscriptions

To subscribe to Shelter Bay's newsletter, send an email indicating your name and lot number to:

jpeters@shelterbay.net

Here's What's Inside

President's Message	2
Community Manager's Report	3
Board Action Items	4
Shelter Bay Happenings	5
Calendar	11

Martha's Beach Closing Hours (Note change of seasonal hours)

October 1-March 31 the Beach closes at 7 p.m.

Community Town Hall

Sunday, November 19, 2023 at 7 p.m. at the Shelter Bay Clubhouse, but send questions to board@shelterbay.net. Watch for follow-up emails and website for reminders.

Did You Know?

Did You

Know?

When a tree falls on your lot, house, or garage, it's your responsibility, not the HOA's.

Karl Newman with the Northwest Insurance Council says your homeowners policy

will cover the damage—whether that tree is on your property or your neighbor's.

"Unless your neighbor has known that there was a problem with that tree and there's negligence involved, or they just didn't take care of it, your policy is the one that protects you regardless of where that tree comes from," Newman told KOMO News.

Call your insurance company to learn more information about what they will cover "when a tree falls on your property.

President's Message



My role as President of the Board has given me the opportunity to meet many new and long-time members of the Shelter Bay community. They are always quick to tell me how much they like Shelter Bay. I met a couple who live in California and found Shelter Bay Marina a perfect place to keep their boat. After a few months of traveling back and forth from the Bay Area to La Conner they decided to buy a home in Shelter Bay and spend more time here. Their long-term plan is to live here. Our marina is a very valuable asset to the community.

Board Member Wendy Poulton and I, with some help from Kendra Emerson, were able to address about forty real estate agents regarding buying and selling homes in Shelter Bay. Real estate on leased land with an HOA makes for different processes than fee simple land without an HOA. Our goal was to reduce the educational workload on our staff who are doing the education one agent at a time. The session was well-received by the agents.

Committees are a vital part of our community. We held a Committee Chair and Vice Chair orientation. The focus was on the rules and regulations governing committees, and some tips on running the meetings. It was good to see all the volunteers who manage the committees discussing the issues as a group. This will ensure inter-committee communication and cooperation. Thanks to Vice President Rick Parnell for organizing the meeting.

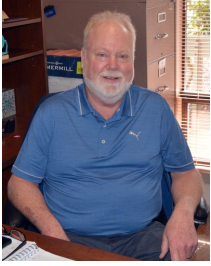
We had a Town Hall Meeting following last month's Board Meeting. It was a highly informative session. The attendees had particularly good questions for the Board members. Being able to answer questions and hear concerns from the community in an informal setting is very productive. I personally enjoy talking about our community. Please drop by the Clubhouse on the Sunday following the board meetings and join in the conversation. The Town Hall starts at 7PM and lasts an hour.

Finally, I would like to report that more progress has been made to create a new lease. The lease group met with the Swinomish attorneys and presented more of our ideas about a framework for a new lease. At that meeting it was decided that we were far enough along to have our attorney meet directly with the Swinomish attorneys. That has been scheduled. We also met with one of the Swinomish lease team members and updated him on the work we have done. If the lawyers can get an agreement on the framework, we are hopeful that we can brief our board, and then the community, on what we have worked out. We will then begin to address the lease rates, and work on projecting rent payments.

October Witches Paddle



Community Manager's Report



Greetings from the Shelter Bay Community Office

All the hard work the Maintenance staff have put into the pool is really starting to pay off. The water is now clear, and we have a pool inspection scheduled for the first week of November. We continue to push to reopen even if it is for a very short time prior to the winter weather setting in. As mentioned in the prior newsletter we are still looking for volunteers to fill the role of pool attendants. If anyone may be interested in being a volunteer pool attendant, please contact the office at 360-466-3805 and speak with Jennifer.

Playground update - We initially anticipated receiving equipment in the last week of October with installation taking place shortly thereafter. However, the shipping date was pushed back a few weeks, and we should hopefully have it by Mid November. As soon as we have a confirmed timeline, we will send out a message to the community advising which date the playground will need to shut down.

Another project that we have been working on is the transition of our accounting software package from Caliber to eUnify. This began before my arrival and has been on hold for quite a while. We have now had additional meetings with eUnify to allow those of us that were not part of the meetings early on to become familiar with the system and all that it can do. Additionally, we were able to clarify questions and concerns that had been raised about our ability to update the information that had previously been loaded into eUnify. We are satisfied that when it comes time to transition all information will be updated before we go live.

We also recently acquired Reserve Analysis software that will allow us to input all capital items, allowing us to track acquisition dates, potential replacement dates, costs, useful lives, etc. This will allow for a much more detailed ongoing in-house analysis that will be extremely helpful during the budgeting and planning processes.

A big shout out to our Maintenance department for their dedication and numerous hours spent working on a challenging water leak up on Klamath Way on Friday the 13th. We ended up having PSE come in as the leak was buried very deep and very close to power lines, and wanted to ensure everyone's safety. Happy to say that everything worked out well and we were back in business the following morning.

As always, I want to acknowledge all the staff that work here at Shelter Bay. They are a hard-working group of talented individuals that do their absolute best to serve the community. I also thank all the volunteers and committee members that contribute their time and expertise to help make Shelter Bay a great place to live.

Warm Regards,
Bill Palmer
Community Manager

Dock Notes—November 2023



In October, your Marina staff participated in a Swinomish Channel Dredge meeting conducted by the Army Corps of Engineers Navigation Chief and attended by stakeholders from Skagit County, local port authorities, and towns. We learned that channel dredging is planned for summer of 2024 with an anticipated start date of mid-July. It is expected that two months' work will be required to return the channel's navigable water to a depth of 12' at MLLW. This dredging is anticipated to be "the most substantial in 40 years", will start at the south entrance of the Channel, continue through town, and conclude at the north entrance. Recreational boaters should not expect major delays when navigating the channel. Stay tuned for more information as it becomes available.

Winter Preparation

November is traditionally the month of windstorms and power outages. Remember that the office does not know any more than you do as to when the power will come back on, so the best advice is to call Puget Sound Energy directly at 1-888-225-5773, or better yet, download PSE's app at Google Play Store or the App Store for iPhone. This way you can monitor outages from your cell phone! It even tells you estimated restore times. When you finish reading this newsletter, take a few minutes to prepare an emergency kit; insert fresh batteries in flashlights; and consider winterizing your water pipes to prevent freezing. Even though power outages and severe weather conditions don't usually last more than 24 hours, good preparations can minimize their effect. Also, keep an eye on drainage ditches near your home. Remove accumulated debris to allow for free flow of stormwater.



shelter bay community, inc.™

Board of Directors - Action Items

Regular Board Meeting – October 18, 2023

- 1) Amended Resolution 23-16 to correct a change of the number of days to appeal a committee decision to align with the Protective Covenants. This will amend the change in all affected documents.
- 2) Requested the Facilities Committee research the 2017 GeoTest Maintenance Recommendations Report for bank stabilization on Skagit Ridge and to come up with a plan of action and implementation timeline and report back to the Board by the December 20, 2023 Board meeting.
- 3) Allowed Food Trucks in Shelter Bay under the direction of the Social & Recreational Committee on a trial basis of 12 months.
- 4) Approved Alan Dietz as a member of the Architectural Compliance Committee and appointed him as Chair.
- 5) Appointed Lynn Parnell as a member of the Social & Recreation Committee.

shelter bay company™

Company Board Meeting – October 18, 2023 — Cancelled

Garden Club News



Our group has been working extremely hard to get the Clubhouse gardens designed with our “Coastal Community” theme with the driftwood. Our goal was to get it completed before the weather changed, and we accomplished that.

I want to thank Fred Robinson for helping me get the first batch of driftwood. Then Fred and his wife Ronna brought us another load to continue the design down to the end. Lynn Parnell has been working on raking pine needles and pinecones and attacking the thistles in that area which we are still working on. Diane Berglund and Janel Nelson trimmed and weeded the garden by the white picket fence by E dock, and it looks great. Kasey Jensen pulled the weeds at the entrance, and it looks great. Jana Cushman trimmed and weeded a garden by the BBQ area, and it looks great. Carol Yaw trimmed and weeded the gardens around the Annex, and it looks great. Thank you to this hard-working team.



The gardens are really starting to take shape and I am happy that the community likes what we are doing. It

takes a team effort to keep the Gardens weeded, trimmed, and looking good, and I am immensely proud of what our team has done.

If you would like to join the Garden Club, let me know, and we will add you to our growing list.

lrshiple@wavecable.com.

Shelter Bay Happenings

Thank you, Leslie!

With the theme of thanksgiving upon us this month, we'd like to give a hearty thank you to Leslie Levenberg for her time, talent and dedication leading SB workout sessions.

BINGO NIGHT IS BACK!



Come one, come all to the bingo hall (aka clubhouse)!

**Saturday, November 4th,
6:30-8:30 pm**

All ages invited.

Quirky white elephant gifts for winners, and ICE CREAM for all.

FREE

Sips & Cigs



Bring your cigars and a beverage to sip, and enjoy visiting with new and current neighbors. (You don't have to smoke to attend).

When: Thursday, November 9, 3-5pm

**Where: BBQ picnic pavilion
by the clubhouse**

Coffee & Donuts



All Shelter Bayers are invited to a fun (*free*) COFFEE & DONUT SOCIAL HOUR At the BBQ picnic pavilion by the clubhouse.

Thursday, November 16th @ 10 a.m.

Shelter Bay Annual Thanksgiving Dinner



It's time to reserve your seat for the Shelter Bay Annual Thanksgiving Day catered dinner at Clubhouse.

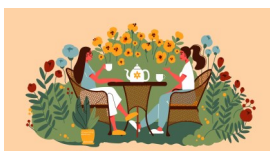
It will be traditional Thanksgiving dinner with common side dishes, including dessert. \$20.00 per person.

Sign up deadline is November 16. Please sign up and pay at the SB office. No cancelation allowed after the deadline. Catered by the local Wayfinder Market. BYOB.

Thursday, November 23, social hour starts at 2 p.m. with dinner at 3 p.m.

*Residents in the past have brought their own holiday place setting for the dinner instead of using the holiday paper plates and utensils provided.

CALLING ALL SHELTER BAY LADIES!



Come join your neighbors once a month for a friendly breakfast. Here's a chance to make new friends, visit

with old friends, and find out what's happening. Join us **Friday, November 3, 9:15 a.m.** at Shawn O'Donnell's Farmhouse.

Mark your calendar for our December 1, 2023 breakfast.

Chorus Christmas



Mark your calendar! Shelter Bay Chorus will be performing their Holiday Concert at the Clubhouse at 7pm Friday, December 8 and 2:00 Saturday, December 9th. Please come and enjoy

MARK YOUR CALENDARS FOR UPCOMING EVENTS

Bingo

**Sunday, December 10
6:30-8:30pm.**

Movie & Pizza Night for all
**Sunday, December 17
5pm.**

Thank you, Sturgis Sweets!

A heartfelt shoutout to Sturgis Sweets of La Conner Kettle Corn for supplying our community (and office staff) with their yummy kettle corn at our Trunk or Treat event.

Shelter Bay Happenings

SHELTER BAY BOOK CLUB

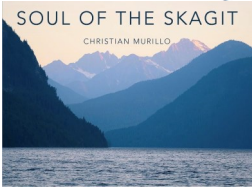
We meet on the first Monday of the month at 1:00 p.m. Changes may happen due to holidays. Please contact Lee Ann Wing at lwing@wavecable.com with any questions, and/or to update our email list.



When: Monday, November 6, 2023
Book: The Untethered Soul: The Journey Beyond Yourself
By: Michael A. Singer
Location: Madeleine Volum
 827 Shoshone Drive
RSVP: molum@outlook.com
 1-305-562-3595

When: Monday, December 4, 2023
Book: The Man Who Died Twice
By: Richard Osman
Location: Kathy Develle
 482 Wanapum Place
RSVP: kathy.develle@gmail.com
 360-466-0408

Communiversi—Soul of the Skagit



Thursday, November 16, 2023 at the Clubhouse and on Zoom, 6:30-8:30 p.m.

Christian Murillo hiked to the Skagit river's glacial headwaters, to its delta, and to the Salish sea beyond. Come and hear about the river's origin, where it flows to and the impact it has on the environment, its fauna, and the human beings who have depended on its waters for centuries. Climate change is influencing the river's course but there is still time to reverse the damage and prevent further damage.

Click here to register <https://forms.gle/wb33EYNcJeCCKnGz9>

Fall Area Events

November 4 and 5
 Holiday Market at the Depot,
 Anacortes

November 9, 4-7pm
 Re-Feather Holiday Open House
 Re-Feather Your Nest, next-door to
 Calico Cupboard, Mt. Vernon

November 9-12
 Nutcracker Holiday Gift Show
 Depot, Anacortes

November 10-13
 Arts Alive, Maple Hall, La Conner

November 12
 Holiday Market Valley Made Market
 Christianson's Nursery, Best Road

November 17
 Jingle Belles, a ladies night of
 Shopping
 Downtown La Conner

November 24-26
 Festival of the Trees
 Saint Joseph Center, Mt Vernon



FALL BACK

REMEMBER TO CHANGE YOUR CLOCKS BACK ONE HOUR

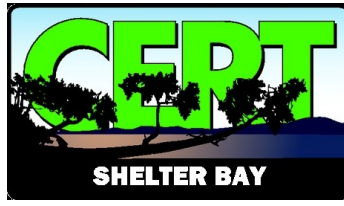


FIRE DISTRICT 13

September 16-October 15, 2023

Response Summary

Cardiac	1
Falls	6
Medical	5
Unconscious	1
Welfare Check	10
Wires Down	1
Total Responses	24



“Build Yourself a Notebook.” I would suggest a three-ring binder or a folder.

If you were unable to make any of the recent Emergency Preparedness events, there is a packet of flyers available in the office. We are currently in the process of preparing a binder which we plan to house at the Shelter Bay

Library, Annex Building, in the coming months, with copies of flyers/ brochures.

If you are interested in helping as part of the community Tent Team or learning more about the Disaster Assistant Center, contact Bernard Robinson, Logistics Manager, at bnbrobinson@yahoo.com or Carolyn Caporgno, Community Emergency Response Team (CERT) Advisory Committee Chairperson

at carolyncaporgno@gmail.com. Bernard will be away the month of November, but will be ready to answer your questions in December.

Remember, You Are the Help Until Help Arrives!

Safety Committee

Effective Emergency Participation

Wednesday, November 29, 2023
6-8 p.m.
Clubhouse

In follow up to the wonderful Earthquake presentation, the Safety Committee will be hosting this event. Bring your questions as we venture through various communication and assistance options following a major event.

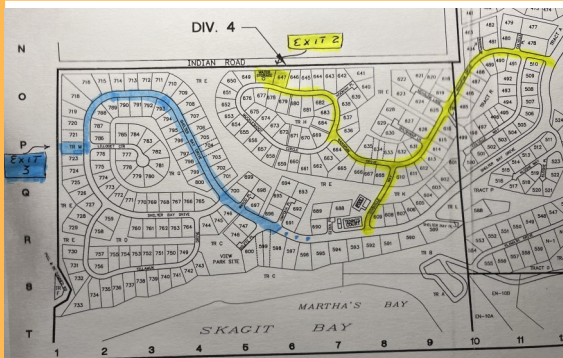
Emergency Preparedness

The 4.3 magnitude tremor that Shelter Bay felt on Sunday night October 8th was a gentle reminder that we live in Earthquake County. The epicenter was by Marrowstone Island, near Port Townsend, only 30 miles from Shelter Bay. The earthquake was 35 miles deep, on the underlying Juan de Fuca Plate, and depth absorbed some of the energy released by displacement. Next time might be quite different.

How should we deal with the prospect of earthquakes, large or small? Earthquakes are rare and random: the Big One might be tomorrow, or not for fifty years. The most reassuring action is to have a plan that guides you and your family before, during, and after an earthquake. It makes the prospect of a quake less terrifying if you can say “I know what we’ll do.”

Disaster planning guides are available in the Shelter Bay Office. You can also download US Government disaster planning guides from: <https://www.ready.gov/earthquakes>. Have a plan and avoid worry!

Emergency Exits



Emergency Exits: Traffic in and out of our Main Gate usually flows smoothly, with only momentary waits during morning and evening “rush hour” traffic. However, if it were necessary to evacuate Shelter Bay then residents all trying to leave at the same time would create a monster traffic jam. The situation would be worsened if the Swinomish Village were also evacuated.

There are other options! Shelter Bay has two more emergency exits.

Emergency Exit #2 (the yellow route on the map) is accessed from Shelter Bay Drive by going up Wanapum Drive, or Coquille Drive to Wanapum Drive, to Muckleshoot Circle. Turn right at the top of Wanapum hill onto Muckleshoot Circle. Continue around Muckleshoot Circle until you see the big green water tank on your right. The emergency gate is between the water tank and lot 647. This gate is usually locked but will be unlocked during emergencies.

Emergency Exit #2 brings you to Indian Road. A right turn will take you to Snee-Oosh Road. A left turn will take you to Pull and Be Damned Road, which leads to Snee-Oosh Road.



Emergency Exit #3 (the blue route on the map) is accessed from Shelter Bay Drive. Continue around Shelter Bay Drive until you see Exit #3 opposite Lillooet Court, between Lots 721 and 723. This leads to Pull and Be Damned Road where a right turn will take you up to Snee-Oosh Road. This gate is usually locked but will be unlocked during emergencies.

Note the Emergency Exit directional signs on the STOP signs at major intersections. The signs will guide you to the nearest Emergency Exit. Familiarization with our Emergency Exits could make a significant difference in an evacuation.



LOCAL SERVICES

Advertising in *Shelter Bay News* does not imply an endorsement by Shelter Bay Community, Inc. or the Board of Directors
 Please see the shelterbay.net for advertisement information.

How much can I sell my Shelter Bay home for? View all the homes listed for sale in Shelter Bay at <http://www.shelterbaylaconner.com> According to the National Association of Realtors 96% of all Buyers begin their home search on the internet. The Tim Good Team provides a strong internet presence including the best marketing program, aerial photography, and professional graphics required to produce the results you want. Your listing will be a featured listing on Zillow.com, placed



on the MLS (multiple listing service), Trulia, Realtor.com, Redfin, and syndicated to thousands of top rated real estate web pages. Buyers searching the internet will click more than twice on your featured home because we use the latest technology to compel them to take a closer look at your home. As Shelter Bay residents, Tim and Mo know the unique requirements of Shelter Bay to close the sale of your home. Call Tim at 360-708-3828 or email at timgood777@gmail.com or call Mo at 360-441-9719 managing brokers RSVP Real Estate.



NextHome
PREVIEW PROPERTIES

Greg Nelson, CRS
 360-661-1558 or gregvirgelnelson@gmail.com
www.shelterbayhomes.net
"A Tradition of sound advice"

TILLINGHAST
POSTAL and
BUSINESS CENTER

TILLINGHASTPOSTAL.COM
 (360) 466-0474
 521 MORIS ST, LA CONNER, WA 98257

MONDAY-FRIDAY 8:30-5:30
SATURDAY 9-1

- GRAPHIC DESIGN
- OFFICE SUPPLIES
- PRINTING
- SHIPPING
- PO BOXES
- NOTARY PUBLIC
- AND MORE!



LOCAL SERVICES

Advertising in *Shelter Bay News* does not imply an endorsement by Shelter Bay Community, Inc. or the Board of Directors

Laura's Cleaning Service

(25 Years Professional Experience)

*Residential, Commercial, Move-in,
Move-out, and New Construction*

425-760-6770



- *Free Estimates
- *Excellent References
- *Licensed and Insured



Fidalgo Electric

Service Calls, Panel Upgrade,
Remodels, Lighting,
Backup Generator Systems
Electric Vehicle Charging

Mark Moran
Owner
P.O. Box 711
La Conner, WA 98257

360-202-4262

Fidalgoelectric@aol.com
www.Fidalgoelectric.com



ABSOLUTE WINDOW CLEANING

"CLEAN AND HAPPY"

(360) 202-8387

WWW.AWCLEANANDHAPPY.COM

VINTAGE LaCONNER

THRIFT & CONSIGNMENT SHOP

Clothing, Housewares, Furniture, Collectibles, Linens,
Books/Games/CDs/DVDs, Shoes, Art, Antiques, More!

Shopping: Fri-Sat-Sun, 11am - 5pm

Donations: Mondays 1 - 3pm

Corner of 3rd & Morris

New arrivals posted Thursdays on our Facebook page.
Non-profit shop sends proceeds back to our community.



Jackie Stone

MANAGING BROKER

CELL (360) 661-2247

OFFICE (360) 293-8008

FAX (360) 293-4049

jackiestone@windermere.com

Shelter Bay Resident



3018 Commercial Avenue | Anacortes, WA 98221

La CONNER Yacht Sales

Thinking of selling your powerboat? La Conner Yacht Sales is busy with buyers and would like to talk with you about listing your vessel. Give us a call or stop by our office located in the La Conner Marina.

360.466.3300 Art, Marcie & Tony

LOCAL SERVICES

Advertising in *Shelter Bay News* does not imply an endorsement by Shelter Bay Community, Inc. or the Board of Directors



GOODGUYS™
Roof & Gutter Cleaning
Home Maintenance

Call (360) 840-5508 for a free consultation.



TEAM
KELLI LANG
RE/MAX GATEWAY



EVERYTHING WE TOUCH
TURNS TO *Sold!*

- #1 team in WA state
- #10 team in the US
- #23 team worldwide

team@kellilang.com | KelliLangRealEstate.com



RE/MAX Wendy POULTON
BROKER - REALTOR®, MRP | RE/MAX ELEVATE

(360) 840-3059
wendy@wendypoulton.com
wendypoulton.com

Northwest Multiple Listing Service REALTOR



LA CONNER RETIREMENT INN

Happy Hour
& LIVE MUSIC

Friday, November 10, 2023 | 3 PM - 4 PM
204 N 1st St. | La Conner, WA

Join La Conner Retirement Inn for our November Happy Hour!
Mix and mingle while enjoying refreshments, hors d'oeuvres,
and live entertainment by the Salt Dirt Band!

RSVP
info@laconnerretirementinn.com or 360-466-5700

November 2023

Sun	Mon	Tue	Wed	Thu	Fri	Sat
			1 7:30am Exercise Class 9:30am Exercise Class 3pm Finance Committee	2 9am Facilities Amenities Committee 4pm Chorus Practice	3 7:30am Exercise Class 9:30am Exercise Class 10:15am Line Dancing Class	4 6:30pm SRC Family Bingo & Ice Cream
5 	6 7:30am Exercise Class 9:30am Exercise Class 3pm Safety Committee Meeting	7 9am Architectural Compliance Committee Meeting 2pm Rules Committee Meeting	8 7:30am Exercise Class 9:30am Exercise Class 2pm Social & Recreation Committee Meeting	9 10am Green Committee 1:30pm Communications Committee Meeting 3-5pm Sips & Cigs 4pm Chorus Practice	10 Office will be open—No Holiday 7:30am Exercise Class 9:30am Exercise Class 10:15am Line Dancing Class	11 Veterans Day 
12	13 7:30am Exercise Class 9:30am Exercise Class 10am Community Emergency Response Team (CERT) — Annex	14 3pm Harbor Committee Meeting	15 7:30am Exercise Class 9:30am Exercise Class 4pm Shelter Bay Board of Directors Meetings	16 10am SRC Coffee and Donuts 12:30pm Thanksgiving Dinner Sign-Up Deadline—\$20 per person 4pm Chorus Practice 6:30pm Community— Soul of the Skagit	17 7:30am Exercise Class 9:30am Exercise Class 10:15am Line Dancing Class	18
19 7pm Town Hall	20 7:30am Exercise Class 9:30am Exercise Class	21 9am Architectural Compliance Committee Meeting	22 7:30am Exercise Class 9:30am Exercise Class 12pm Newsletter articles due for December issue	23 Office Closed—Thanksgiving 2pm Thanksgiving Dinner Social Hour BYOB 3pm Thanksgiving Dinner	24 Office Closed—Thanksgiving 7:30am Exercise Class 9:30am Exercise Class 10:15am Line Dancing Class	25
26	27 7:30am Exercise Class 9:30am Exercise Class	28	29 7:30am Exercise Class 9:30am Exercise Class 6pm Effective Emergency Participation Safety Committee Resident Event	30 4pm Chorus Practice		

Agendas are posted at the Website. Members must log-in. Shelter Bay residents are encouraged to attend.
 Please visit the Calendar page at www.shelterbay.net for updates.



shelter bay community, inc.

1000 Shoshone Drive
La Conner, WA 98257

PRSRT STD
U.S. POSTAGE
PAID
GOLD BAR WA
PERMIT NO 1

shelter bay community, inc.

Shelter Bay Community Manager
Bill Palmer

Board of Directors

President - Rod Proctor

Vice President - Rick Parnell

Secretary - Monte Hicks

Treasurer - Jan Paul

Secretary Pro Tem - Nancy Shimeall

Directors—Lawson Earl, Gary Ladd,

Dan McCaughan, Wendy Poulton

Executive Secretary - Ann Serwold

Committee Chairpersons:

Architectural Compliance: Open

Rules: Don Moore

Harbor: Brad Howton

Communications: Jim Barrett

Green: Julie Peddy

Facilities: Jack Galbraith

Finance: Jan Paul, Treasurer

Safety: Brad Reading

Social & Recreation: Katie Reading

Committee Secretary: Renata McCauley