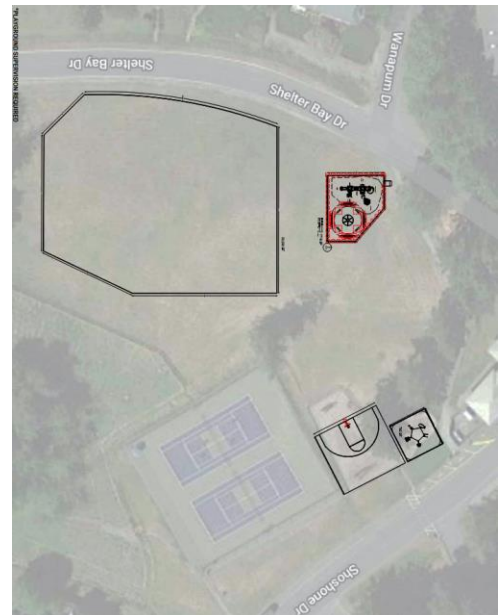


## Shelter Bay Members

Plans are being made, contractors have been contacted and a budget of up to \$80,000 has been approved to replace the existing Children's Playground equipment. Before there is a decision upon a final design, equipment selected and any location options we need your input as parents, grandparents and even youth users. Please look over the plans that are below including pictures of the available equipment and then send in your comments. Deadline for comments is Wednesday June 14, - 12:00 noon.

### Current and adjacent locations



### Recommended Surface:

Engineered wood fiber (Playground Mulch) meets the ASTM standard ASTM F1951. Engineered wood fiber is an economical playground surfacing used on 75% of all playgrounds in the U.S. because of its high impact absorbing qualities yet firm, slip resistant surface. Less expensive products such as sand and pea gravel do not meet ADA guidelines. "

## Possible Equipment:







The Hills  
SKU: PGB-34524



Ages  
2 to 12

Use Zone: 45ft x 33ft  
Child Capacity: 46  
Play Activities: 19

3.5" Arch Swing Frame 8ft - 1 Bay  
SKU: PGBASF-350801



**Potential additional equipment location - Rainbow Park:**



**Provide your suggestions:**

**[Click Here for Input Form](#)**