

836134

20.00

75 RB 3:16

AMENDMENT TO SURVEY RECORDED MAR. 17, 1970 UNDER A.F. # 737015, VOL.43, Pg.854, RECORDS OF SKAGIT COUNTY, WASH.

AMENDED SURVEY OF SHELTER BAY DIV. 5

SECTION 2, TWP. 33.N., RGE. 2 E., W.M.

TRIBAL LANDS OF THE SWINOMISH INDIAN RESERVATION

A portion on the NE 1/4 of Section 2, Township 33 N., Range 2 E., W.M., being more particularly described as follows:

COMMENCING at the center of said Section 2; thence South 89°06'15" East along the south line of said subdivision a distance of 2237.25 feet to the True Point of Beginning; thence North 0°51'45" East a distance of 173.36 feet to a point which intersects the arc of a curve; said curve having a radius point that bears North 21°12'22" West a distance of 165.00 feet; said curve lying on the Southerly right-of-way of a Plat road; thence Easterly along the arc of said curve through a central angle of 19°22'06" a distance of 55.78 feet; thence North 49°25'32" East a distance of 88.42 feet to the beginning of a tangent curve which bears to the left and having a radius of 50.00 feet; thence along the arc of said curve through a central angle of 117°15'32" a distance of 102.33 feet; thence North 67°50' West a distance of 105.65 feet to the beginning of a tangent curve which bears to the left and has a radius of 365.00 feet; thence along the arc of said curve through a central angle of 12°05'36" for a distance of 77.04 feet; thence North 79°55'36" West a distance of 39.62 feet to the beginning of a tangent curve which bears to the right and has a radius of 85.00 feet; thence along the arc of said curve through a central angle of 35°06'51" for a distance of 52.09 feet; thence North 44°48'45" West a distance of 27.60 feet to the beginning of a tangent curve which bears to the left and has a radius of 115.00 feet; thence along the arc of said curve through a central angle of 28°57'34" for a distance of 58.13 feet; thence North 73°46'19" West a distance of 76.18 feet to the beginning of a tangent curve which bears to the left and has a radius of 515.00 feet; thence along the arc of said curve through a central angle of 8°51'46" for a distance of 79.66 feet to the beginning of a reverse curve that bears to the right and has a radius of 485.00 feet; thence along the arc of said curve through a central angle of 14°35'33" for a distance of 123.52 feet; thence North 68°02'32" West a distance of 100.91 feet to the beginning of a tangent curve to the left having a radius of 215.00 feet; thence along the arc of said curve through a central angle of 24°06'51" for a distance of 90.49 feet; thence North 87°50'37" East a distance of 40.36 feet to the beginning of a tangent curve bearing to the right and having a radius of 485.00 feet; thence along the arc of said curve through a central angle of 16°56'44" for a distance of 143.44 feet to the beginning of a reverse curve which bears to the left and has a radius of 115.00 feet; thence along the arc of said curve through a central angle of 24°21'08" for a distance of 48.88 feet; thence North 23°15' West a distance of 338.29 feet to the beginning of a tangent curve that bears to the right and has a radius of 185.00 feet; thence along the arc of said curve through a central angle of 28°28'35" for a distance of 84.49 feet; thence North 5°13'35" East a distance of 201.45 feet to the beginning of a tangent curve which bears to the right and has a radius of 20.00 feet; thence along the arc of said curve through a central angle of 87°29'59" for a distance of 30.54 feet;

CONTINUED

thence North 31°08'38" East a distance of 259.32 feet; thence North 58°51'22" West a distance of 34.125 feet; thence North 26°16'57" West a distance of 246.95 feet; thence North 18°52'55" East a distance of 240.45 feet; thence North 36°33'25" East a distance of 360.12 feet; thence South 25°00' East a distance of 382.06 feet; thence North 81°00' East a distance of 1473.04 feet; thence South 2°42'18" West a distance of 127.73 feet; thence South 9°00' West a distance of 1325.12 feet; thence South 21°40'07" West a distance of 725.30 feet; thence North 89°08'15" West a distance of 410.14 feet to the True Point of Beginning.

SURVEYOR'S CERTIFICATE

THESE MAPS CORRECTLY REPRESENT A SURVEY MADE BY ME OR UNDER MY DIRECTION IN CONFORMANCE WITH THE REQUIREMENTS OF THE SURVEY RECORDING ACT, AT THE REQUEST OF SHELTER BAY COMPANY THIS 2 DAY OF JUNE, 1976

Fred Payner
REGISTERED LAND SURVEYOR

L.S. NO. 12716

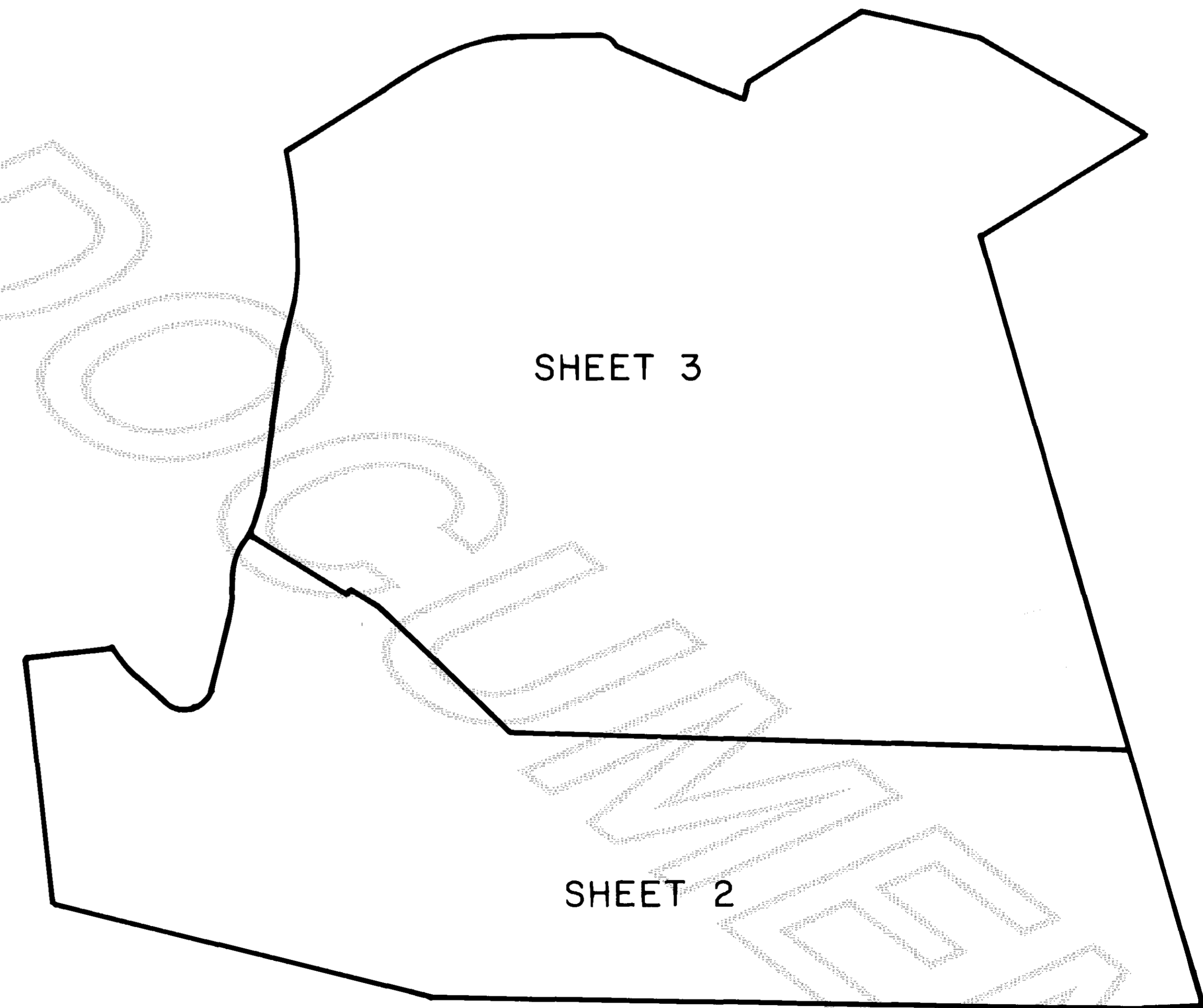


RECORDING CERTIFICATE

FILED FOR RECORD BY CASCADE SURVEYING AND ENGINEERING, INC. THIS 2 DAY OF JUNE, 1976, A.D., AT 16 MINUTES PAST 3 O'CLOCK P.M. AND RECORDED IN VOLUME 1 OF SURVEYS ON PAGE 182 RECORDS OF SKAGIT COUNTY, WASHINGTON.

Luella Neenan
COUNTY AUDITOR

Robert Blackburn
DEPUTY AUDITOR



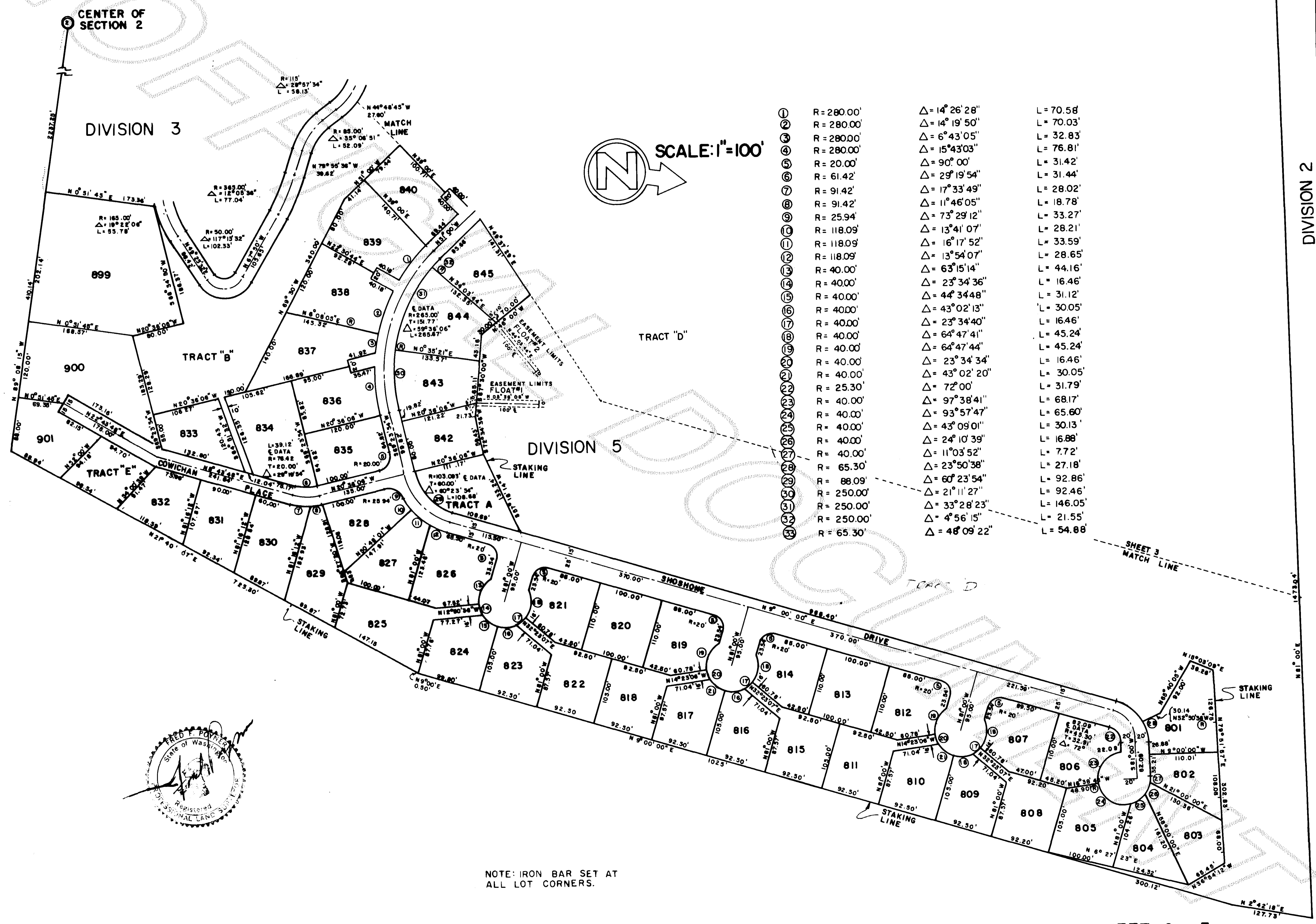
EASEMENT PROVISIONS

A nonexclusive easement is hereby reserved for and granted to: PUGET SOUND POWER & LIGHT COMPANY and CONTINENTAL TELEPHONE COMPANY of the NORTHWEST and their respective successors and assigns, on all roads and under and upon the exterior seven (7) feet parallel and adjacent to the road frontage with two and one-half (2 1/2) feet on the side and five (5) feet on the back lots lines of all lots in which to install, lay, construct, renew, operate and maintain underground conduits, cable, and wires with necessary facilities and other equipment for the purpose of serving the subdivision and other property with electric and phone service, together with the right to enter upon the roads and lots at all times for the purposes stated.

836134
176 JUN 2 PM 3:16

SHELTER BAY DIV. 5

SECTION 2, TWP. 33 N., RGE. 2 E., W.M.



1	R = 280.00'	Δ = 14° 26' 28"	L = 70.58'
2	R = 280.00'	Δ = 14° 19' 50"	L = 70.03'
3	R = 280.00'	Δ = 6° 43' 05"	L = 32.83'
4	R = 280.00'	Δ = 15° 43' 03"	L = 76.81'
5	R = 20.00'	Δ = 90° 00'	L = 31.42'
6	R = 61.42'	Δ = 29° 19' 54"	L = 31.44'
7	R = 91.42'	Δ = 17° 33' 49"	L = 28.02'
8	R = 91.42'	Δ = 11° 46' 05"	L = 18.78'
9	R = 25.94'	Δ = 73° 29' 12"	L = 33.27'
10	R = 118.09'	Δ = 13° 41' 07"	L = 28.21'
11	R = 118.09'	Δ = 16° 17' 52"	L = 33.59'
12	R = 118.09'	Δ = 13° 54' 07"	L = 28.65'
13	R = 40.00'	Δ = 63° 15' 14"	L = 44.16'
14	R = 40.00'	Δ = 23° 34' 36"	L = 16.46'
15	R = 40.00'	Δ = 44° 34' 48"	L = 31.12'
16	R = 40.00'	Δ = 43° 02' 13"	L = 30.05'
17	R = 40.00'	Δ = 23° 34' 40"	L = 16.46'
18	R = 40.00'	Δ = 64° 47' 41"	L = 45.24'
19	R = 40.00'	Δ = 64° 47' 44"	L = 45.24'
20	R = 40.00'	Δ = 23° 34' 34"	L = 16.46'
21	R = 40.00'	Δ = 43° 02' 20"	L = 30.05'
22	R = 25.30'	Δ = 72° 00'	L = 31.79'
23	R = 40.00'	Δ = 97° 38' 41"	L = 68.17'
24	R = 40.00'	Δ = 93° 57' 47"	L = 65.60'
25	R = 40.00'	Δ = 43° 09' 01"	L = 30.13'
26	R = 40.00'	Δ = 24° 10' 39"	L = 16.88'
27	R = 40.00'	Δ = 11° 03' 52"	L = 7.72'
28	R = 65.30'	Δ = 23° 50' 38"	L = 27.18'
29	R = 88.09'	Δ = 60° 23' 54"	L = 92.86'
30	R = 250.00'	Δ = 21° 11' 27"	L = 92.46'
31	R = 250.00'	Δ = 33° 28' 23"	L = 146.05'
32	R = 250.00'	Δ = 4° 56' 15"	L = 21.55'
33	R = 65.30'	Δ = 48° 09' 22"	L = 54.88'

NOTE: IRON BAR SET AT ALL LOT CORNERS.

Survey vol 1 pg 185

836134

'76 2 PM 3:16

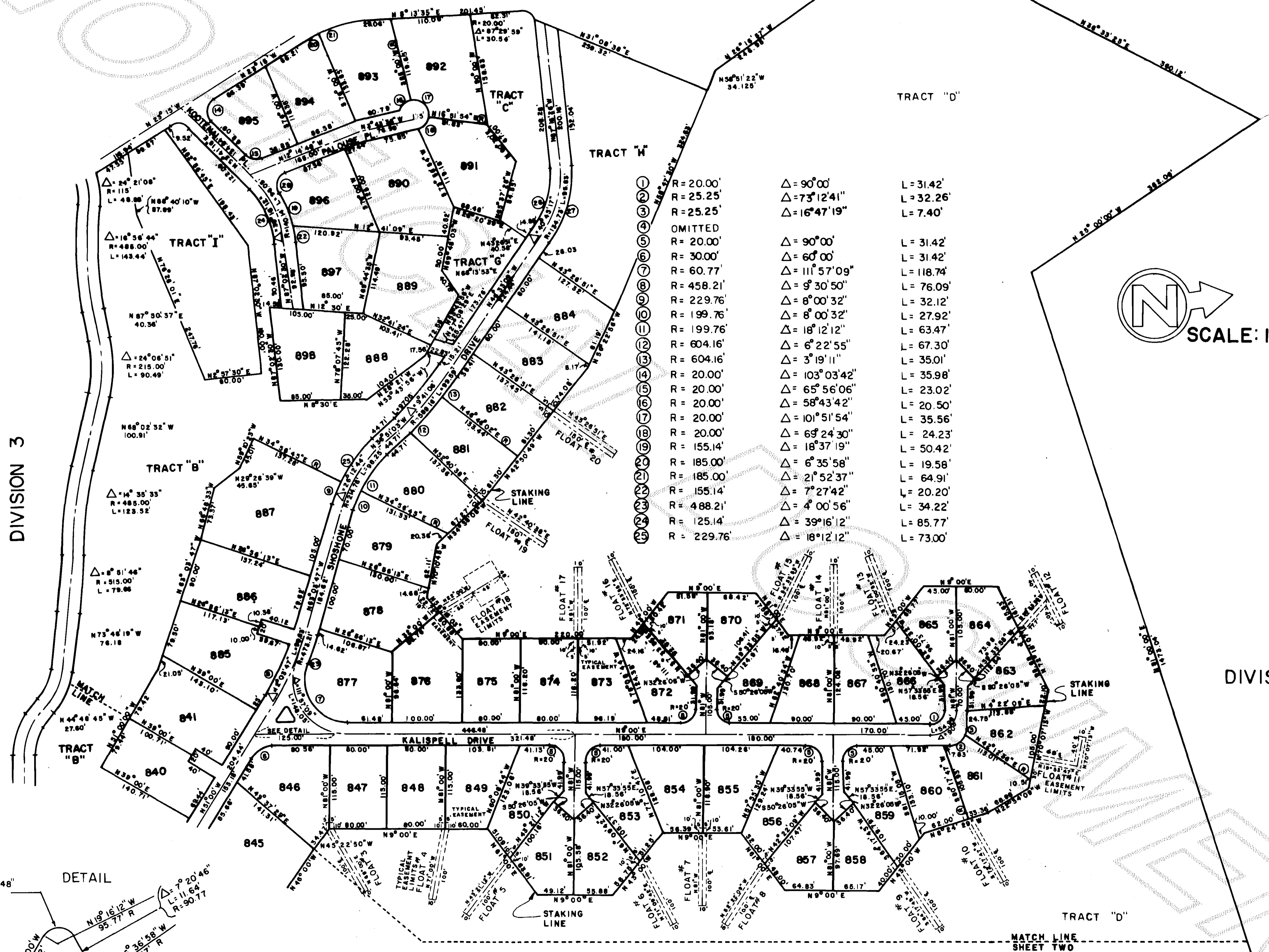
SHELTER BAY DIV 5

SECTION 2, TWP. 33 N., RGE. 2 E., W.M.

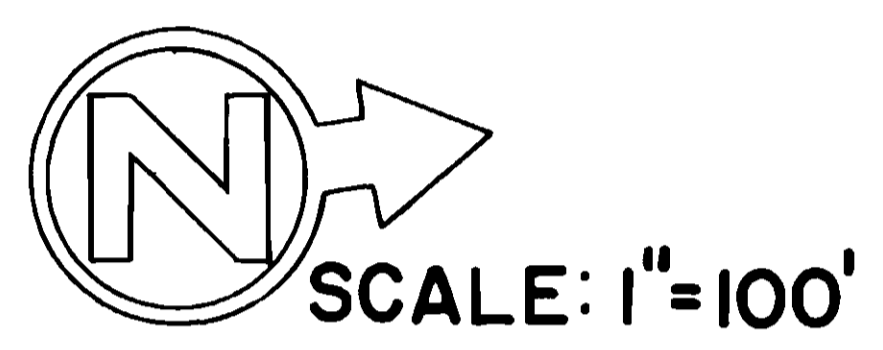
DIVISION 3

DIVISION 3

DIVISION 2

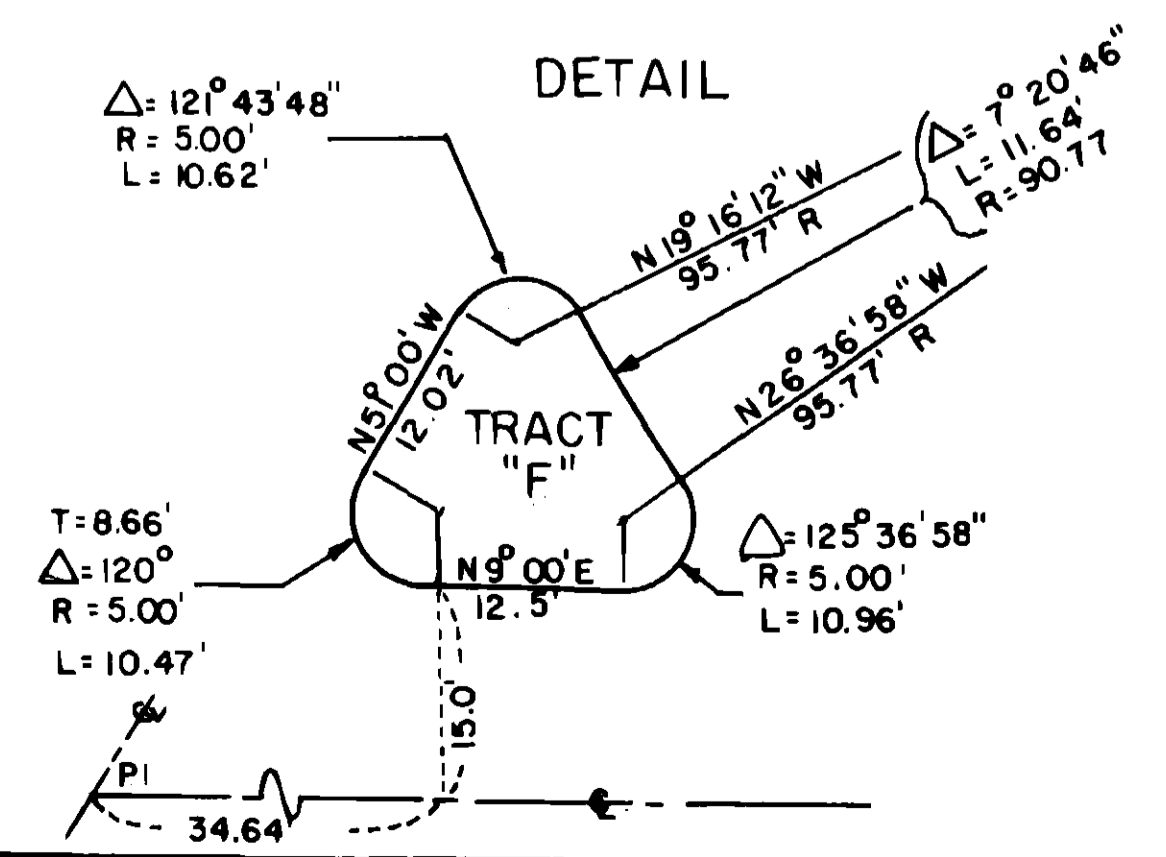


①	R = 20.00'	Δ = 90°00'	L = 31.42'
②	R = 25.25'	Δ = 73°12'41"	L = 32.26'
③	R = 25.25'	Δ = 16°47'19"	L = 7.40'
④	OMITTED		
⑤	R = 20.00'	Δ = 90°00'	L = 31.42'
⑥	R = 30.00'	Δ = 60°00'	L = 31.42'
⑦	R = 60.77'	Δ = 111°57'09"	L = 118.74'
⑧	R = 458.21'	Δ = 9°30'50"	L = 76.09'
⑨	R = 229.76'	Δ = 8°00'32"	L = 32.12'
⑩	R = 199.76'	Δ = 8°00'32"	L = 27.92'
⑪	R = 199.76'	Δ = 18°12'12"	L = 63.47'
⑫	R = 604.16'	Δ = 6°22'55"	L = 67.30'
⑬	R = 604.16'	Δ = 3°19'11"	L = 35.01'
⑭	R = 20.00'	Δ = 103°03'42"	L = 35.98'
⑮	R = 20.00'	Δ = 65°56'06"	L = 23.02'
⑯	R = 20.00'	Δ = 58°43'42"	L = 20.50'
⑰	R = 20.00'	Δ = 101°51'54"	L = 35.56'
⑱	R = 20.00'	Δ = 69°24'30"	L = 24.23'
⑲	R = 155.14'	Δ = 18°37'19"	L = 50.42'
⑳	R = 185.00'	Δ = 6°35'58"	L = 19.58'
㉑	R = 185.00'	Δ = 21°52'37"	L = 64.91'
㉒	R = 155.14'	Δ = 7°27'42"	L = 20.20'
㉓	R = 488.21'	Δ = 4°00'56"	L = 34.22'
㉔	R = 125.14'	Δ = 39°16'12"	L = 85.77'
㉕	R = 229.76'	Δ = 18°12'12"	L = 73.00'



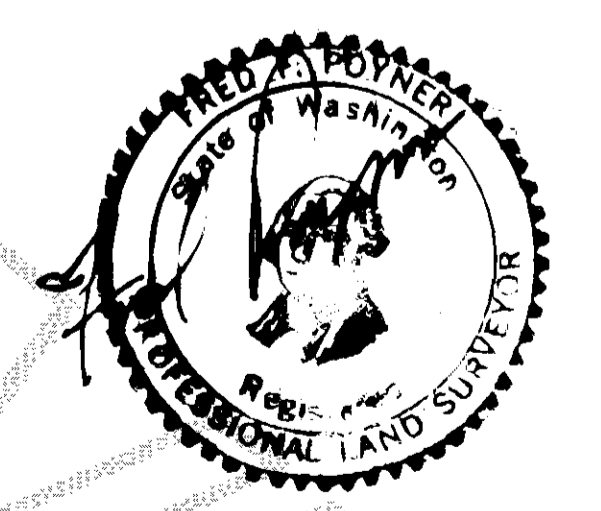
Δ = 20°57'34"
R = 115.00'
L = 58.13'

Δ = 35°06'51"
R = 85.00'
L = 52.05'



NOTE: IRON BAR SET AT ALL LOT CORNERS.

⑳	R = 119.73'	= 40°45'17"	L = 85.16'
㉑	R = 149.73'	= 40°45'17"	L = 106.54'
㉒	R = 20.00'	= 100°52'43"	L = 35.21'



Survey vol 1 pg 186